

E38

2MP Mini Bullet with D/N, Adaptive IR, Extreme WDR, SLLS, Fixed Lens



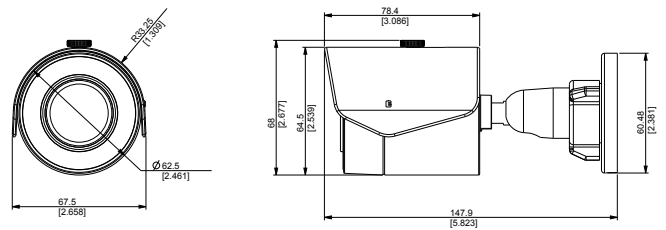
- 2 Megapixel with 1080p
- Day & Night with Superior Low Light Sensitivity and Adaptive IR LED
- Fixed Lens with f2.93mm / F2.0
- Extreme WDR (145 dB)
- 60 fps at 1920 x 1080
- Wide Angle
- Weatherproof (IP67) and Vandal Proof Metal Casing (IK10)
- Built-in Analytics

PHOTO INDICATION



- 1 Memory Card Slot
- 2 Ethernet Port
- 3 Reset Button

DIMENSION DIAGRAM



Unit: mm [inch]

ACCESSORY OPTIONS

| Power Supply | | |
|--------------|---|---|
| PPOE-0001 |  | IEEE 802.3af PoE Injector for Class 1, 2 or 3 devices, with universal adapter |

PRODUCT SPECIFICATION

E38

• Device

| | |
|--------------------------|---|
| Device Type | Outdoor Mini Bullet Camera |
| Image Sensor | Progressive Scan CMOS |
| Sensor Size | 1/2.8" |
| Day / Night | Yes |
| Low Light Sensitivity | Superior |
| Minimum Illumination | Color: 0.1 lux at F2.0 (30 IRE, 2400°K); B/W: 0 lux (IR LED on) |
| Color to B/W Switch | ISP sensor based switch; Configurable |
| Mechanical IR Cut Filter | Yes |
| IR Sensitivity Range | 700 - 1100 nm |
| IR LED | Adaptive IR LED x 12 (850 nm) |
| IR Working Distance | 30 m (0 Lux, 30 IRE, Gain 255, Auto shutter mode) |
| Electronic Shutter | 1/5 ~ 1/2,000 sec (manual mode); 1/5 ~ 1/10,000 sec (auto mode) |
| Horizontal Resolution | 1100 TVL |
| S/N Ratio | 56 dB |

• Lens

| | |
|--------------------------|------------------------------|
| Focal Length / Aperture | Fixed focal, f2.93 mm / F2.0 |
| Iris | Fixed iris |
| Focus | Fixed focus |
| Lens Mount | Board mount |
| Horizontal Viewing Angle | 99° |

• Video

| | |
|--------------------------------|---|
| Compression | H.264 (Baseline / Main / High Profile); MJPEG |
| Max. Frame Rate vs. Resolution | 60 fps at 1920 x 1080; 60 fps at 1280 x 720; 30 fps at 640 x 480; 30 fps at 320 x 240 |
| Multi-Streaming | Simultaneous triple streams based on video configurations |
| Bit Rate | 128 Kbps - 12 Mbps (per stream) |
| Bit Rate Mode | Constant, Variable |
| Image Enhancement | Extreme WDR (145 dB); White balance: automatic, hold, and manual; Brightness; Contrast; Sharpness (auto); Auto gain control; 2D+3D digital noise reduction; Flickerless; Digital image stabilizer |
| Privacy Mask | 4 configurable regions |
| Text Overlay | User defined text on video |
| Image Orientation | Image flip, mirror and rotation (90°) |
| Built-in Analytics | Motion Detection, Tamper, Digital Image Stabilizer, *Line Crossing, *Enter Area, *Missing Object, *Unattended Object (* Some analytics will become available in a future firmware update) |

• Network

| | |
|--------------------|--|
| Protocol & Service | TCP, UDP, HTTP, HTTPS, DHCP, PPPoE, RTP, RTSP, IPv4, IPv6, DNS, DDNS, NTP, ICMP, ARP, IGMP, SMTP, FTP, UPnP, SNMP, Bonjour |
| Ethernet Port | 1, Ethernet (10/100 Base-T), RJ-45 connector |
| Security | IP address filtering; HTTPs encryption; Password protected user levels; Anonymous login; IEEE802.1X network access control |

• Alarm

| | |
|----------------|--|
| Alarm Trigger | Video motion detection (10 regions) |
| Alarm Response | Notify control center; Change camera settings; Command other devices; E-mail notification with snapshots; Save video, snapshot to FTP server; Upload video, Snapshot to FTP server |

• Interface

| | |
|---------------|--|
| Local Storage | *MicroSDHC memory card slot (card not included) (* Functionality will be available in a future firmware update) |
|---------------|--|

• General

| | |
|----------------------------|---|
| Power Source / Consumption | PoE Class 2 (IEEE802.3af) / 4.34W |
| Weight | 362 g (0.80 lb) |
| Dimensions (Ø x L) | 67.8 mm x 146.43 mm (2.669" x 5.773") |
| Bundled Accessories | Bracket |
| Environmental Casing | Weatherproof (IP67); Vandal proof metal casing (IK10) |
| Mount Type | Ceiling, Wall |
| Starting Temperature | -10 °C ~ 50 °C (-14 °F ~ 122 °F) |
| Operating Temperature | -40 °C ~ 50 °C (-40 °F ~ 122 °F) |
| Operating Humidity | 10% ~ 85% RH |
| Approvals | CE (EN 55022 Class B, EN 55024), FCC (Part15 Subpart B Class B), IP67, NEMA 4X, IK10 (metal casing), UL (for optional PoE injector) |

• Integration

| | |
|-------------------------|---|
| Unified Solution | Fully compatible with ACTi software |
| ISV Integration | Software Development Kit (SDK) available; ONVIF compliant |
| GPS Position | Manual Setting |
| Firmware Access Browser | Microsoft Internet Explorer 8.0 or newer (full functionality) Safari with QuickTime installed, and other browsers with VLC installed (partial functionality) |

* All specifications are subject to change without notice.

* All brand names and registered trademarks are the property of their respective owners.

www.acti.com

