

NVRmini 2

Linux Embedded Standalone

Support Megapixel and H.264 cameras



Manage 2 / 4 / 8 / 16 IP Camera



Key Benefits

Stability and Reliability

NVRmini 2 is a linux-embedded system that is free from virus attack. With its server-client architecture, NVRmini 2 provides a most stable and high quality monitoring and recording performance. Not only does its software offer a top quality performance, but the hardware enhances stability as well by supporting 4 RAID levels, smart fan, HDD SMART, auto power on, UPS and much more.

Easy to Use

A top user-friendly system should combine fast and flexible configuration with easy operation. With a few simple steps for installation, the web-based management leads users to configure, monitor and playback video everywhere. UPnP search, auto camera detection and GUI schedule save setting-up time, while the easy drag and drop camera, auto scan, preset point patrolling, and multiple views offer users a prime monitoring experience.

Value-added Surveillance Features

There are some outstanding features included in the NVRmini 2, one of which is mobile phone client. Users can check their live video wherever they want through iPhone, iPad, Android, BlackBerry. Another feature is Point of Sale (POS). POS data is displayed on live screen of designated channels, and users can fast search POS transaction and related video records. Still another NVRmini 2 feature is the digital watermark on exported video and snapshots, which prevents data from tampered without awareness.

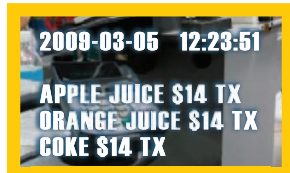
Key Features

- Dual stream for managing bandwidth
- Support iPhone, iPad, Android, BlackBerry mobile clients
- Support panomorph PTZ (360°)
- Web-based live viewer/ playback

- Online GUI recording schedule
- Up to 2/4 SATA HDD bays
- RAID 0,1,5,10
- Digital PTZ and multi-view
- Support audio
- Real-time digital output and email alert

- Up to 128 CH remote liveview
- Playback with 5 intelligent search
- Support Point of Sale (POS)
- Support digital watermark
- Supported by NUVO Central Management System

Web-Based Liveview



Point of Sale (POS)

POS text overlay on live view video and recordings. All recorded POS transactions are searchable in the NVRmini 2 database.



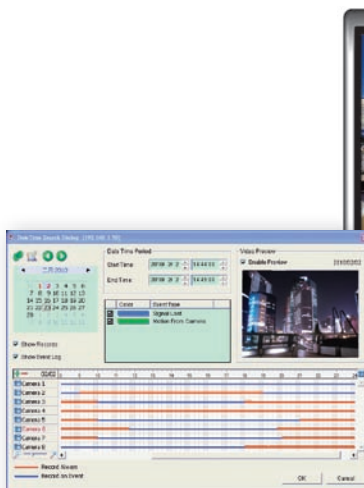
- Web-based management (Recommend on IE7 and later)
- Up to 128 CH remote live display on multiple monitors
- Easy drag-and-drop camera on screen
- Camera PTZ integration
- Digital PTZ
- Auto scan
- Multiple views
- Preset point set, go and patrolling
- Support joystick
- System event popup
- Camera event on screen display and sound notification



Multiple View

with duplicating camera on screen and with different digital zoom image.

Intelligent Playback



- Open record by time, graphic record, event log
- Multi-channel playback
- Playback system with 5 intelligent search
- Video enhancement
- POS search
- Support digital watermark on exported video or snapshot
- Evidence export
- Auto backup video to FTP

Video Enhancement

Fine-tune the image's visibility, sharpness, brightness, contrast or even grey scale.



5 Intelligent Search



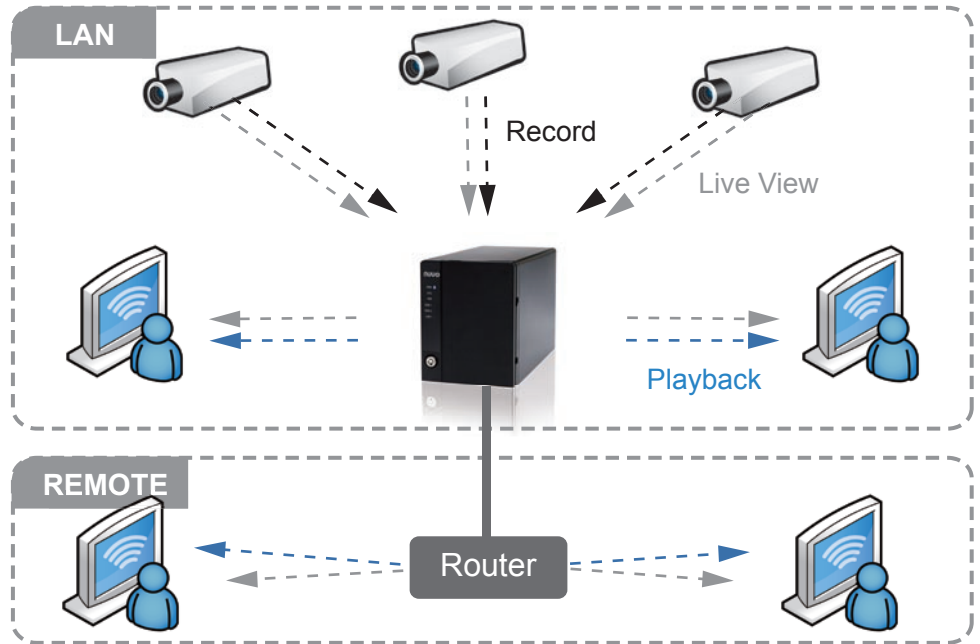
Multiple Language Support

English, Japanese, Traditional Chinese, Spanish, Deutsch, Finnish, French, Hungarian, Italian, Russian, Czech, Korean, Polish, Dutch, Serbian, Swedish, Portuguese (Brazil)

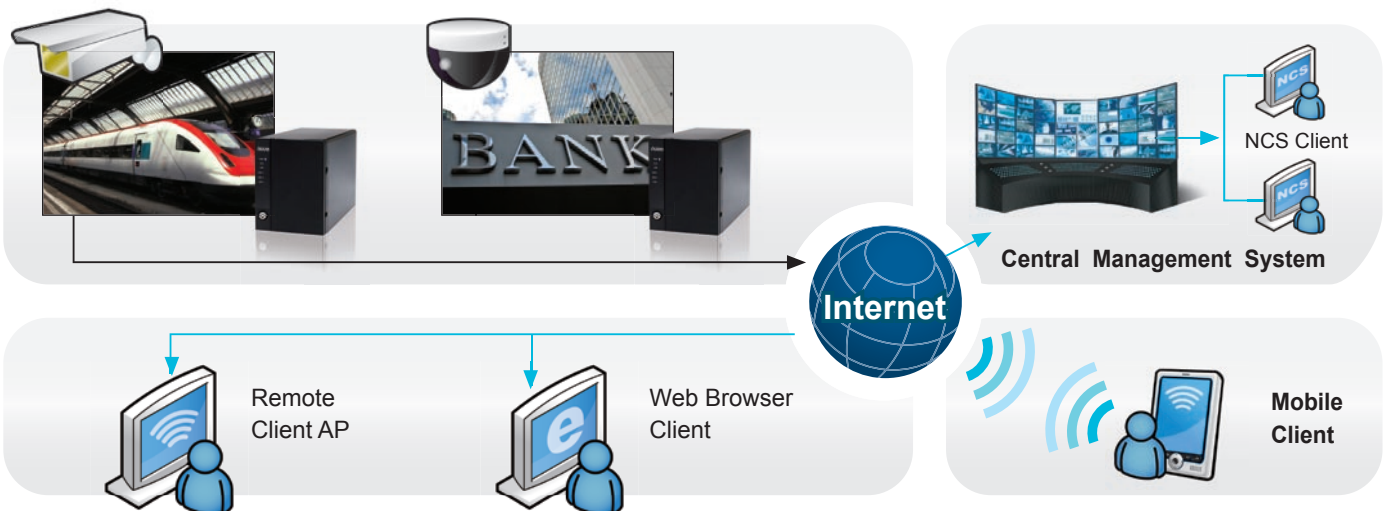


Server-Client Architecture

- Linux Embedded –
 - Free from PC crash and virus attack
- RAID 0,1,5,10, prevention of data loss
- Online GUI recording schedule
- Recording without PC turning on
- Support Megapixel Camera and H.264 Compression Format
- Support audio recording
- Camera I/O integration
- Real-time digital output, email and NUUO CMS alert
- Four kinds of user authorities: administrator, power user, user, and guest
- Log system
- Support Point of Sale (POS)



 <p>Linux-Embedded Embedded Linux for high stability and free from virus attack</p>	 <p>Dual Streams Dual stream for managing bandwidth</p>	 <p>Panomorph PTZ (360°) Panomorph PTZ function can reduce the total cost by decreasing the number of IP cameras. Not only the original view, NVRmini 2 also supports PTZ, quad, and perimeter modes.</p>	 <p>Web-Based Live Viewer Users can login anytime anywhere via Internet Explorer and can login via four different user groups: administrator, power user, user, and guest.</p>	 <p>Compatible with CMS Ultimate central monitoring solution for grand scale projects and projects with multiple sites.</p>	 <p>Multi-Platform Mobile Clients iPhone, iPad, Android, Windows Phone 7 and BlackBerry.</p>
 <p>Intelligent Search Search recorded video for 5 events including general motion, foreign object, missing object, loss focus and camera occlusion.</p>	 <p>RAID 0,1,5,10 Support RAID 0,1,5 and 10 for maximum capacity or data protection.</p>	 <p>PTZ Control Software enables digital PTZ function. Physical PTZ control and preset/go functions are also available.</p>	 <p>128CH Remote Live View Monitor multiple NUUO servers (NVR, DVR, NDVR and NVRmini 2) simultaneously in one single interface.</p>	 <p>Email Alert Notify users on camera and system event through sound, digital output, E-mail and NUUO CMS alert.</p>	 <p>Point of Sale (POS) All recorded POS transactions are searchable in the NVRmini 2 database.</p>



Specification

Model	NE-2020	NE-2040	NE-4080	NE-4160
Recording Camera	1-2	1-4	1-8	1-16
Number of Drives	2xSATA II	2xSATA II	4xSATA II	4xSATA II
Available Drive Bays (US only)	1, 2, 6TB	1, 2, 6TB	1, 4, 8, 12TB	1, 4, 8, 12TB
RAID Level	RAID 0,1	RAID 0,1	RAID 0, 1, 5, 10	RAID 0, 1, 5, 10
I/O Interface	2xUSB 2.0 (for UPS)	2xUSB 2.0 (for UPS)	2xUSB 2.0 (for UPS), 1xeSATA (no purpose in the current)	2xUSB 2.0 (for UPS), 1xeSATA (no purpose in the current)
LAN Port (s)	1xGigabit RJ-45 ethernet port	1xGigabit RJ-45 ethernet port	2xGigabit RJ-45 ethernet ports	2xGigabit RJ-45 ethernet ports
Temperature	Operating : 0°C ~ 40°C			
Humidity	Operating : 10% ~ 85%			
Compression Format	MPEG4, M-JPEG, H264, MxPEG (Depends on IP camera)			
Recording Performance	Camera dependent Total bitrate: 40Mbps (Around 60fps at 1.3M)	Camera dependent Total bitrate: 40Mbps (Around 120fps at 1.3M)	Camera dependent Total bitrate: 80Mbps (Around 240fps at 1.3M)	Camera dependent Total bitrate: 80Mbps (Around 240fps at 1.3M)
Remote PC CPU	Intel Core 2 Duo, 2.6 GHz			
Remote PC RAM	1 GB			
User Interface	HTTP web browser - Internet Explorer 7 and later/ NUUO client application program			
Recording Type	Continuous record, record by schedule, manual record, event trigger record, digital input trigger record			
Remote Live View Control	Live view, preset/ go, PTZ, remote I/O, snapshot, multi-view, digital PTZ, advanced E-Map, bandwidth monitoring			
Audio & Video Recording	Audio & video recording in synchronization			
POS	Live view, record, playback, and search for every transaction			
Auto Backup	Automatically backup the recorded video of the previous date to FTP			
Smart Search	General motion, missing object, foreign object, lose focus, camera occlusion			
Remote Client OS Platform	Windows XP (32-bit) / Vista (32-bit) / 7 (32 and 64-bit)			
Remote Live View Connections	Live view maximum 64 connections at the same time			
Mobile Client OS Platform	iPhone, iPad, Android, BlackBerry			

IP Camera Brand Support ACTi, ArecontVision, ARM, Axis, Basler, Brickcom, Bosch, Cisco, CNB, D-Link, Dynacolor, Eneo, Fine, HIKVISION, Honeywell, IQinVision, LevelOne, Lumenera, Linksys, Mobotix, Onvif, Panasonic, PiXORD, Samsung, Santec, SANYO, Sony, StarDot, Toshiba, Truen, Videosec, VIVOTEK, Zavio

Part Number	Remark
NE-2020-AU	NE-2020 with AU cable
NE-2020-EU	NE-2020 with EU cable
NE-2020-JP	NE-2020 with JP cable
NE-2020-UK	NE-2020 with UK cable
NE-2020-US	NE-2020 with US cable
NE-2040-AU	NE-2040 with AU cable
NE-2040-EU	NE-2040 with EU cable
NE-2040-JP	NE-2040 with JP cable
NE-2040-UK	NE-2040 with UK cable
NE-2040-US	NE-2040 with US cable
NE-4080-AU	NE-4080 with AU cable
NE-4080-EU	NE-4080 with EU cable
NE-4080-JP	NE-4080 with JP cable
NE-4080-UK	NE-4080 with UK cable
NE-4080-US	NE-4080 with US cable
NE-4160-AU	NE-4160 with AU cable
NE-4160-EU	NE-4160 with EU cable
NE-4160-JP	NE-4160 with JP cable
NE-4160-UK	NE-4160 with UK cable
NE-4160-US	NE-4160 with US cable

Support 33 brands of IP cameras and 930 models



About NUUO

NUUO is the world's leading provider of open platform video management solutions. Combining IP and analog technologies with IVS detections, NUUO guarantees a comprehensive security and surveillance solution to meet your high standard demands. Simple to install and manage, with customer-proven reliability, a high compatibility for 3rd party system integration and a wide range of IP camera support solutions in more than 20,000 worldwide installations, NUUO is dedicated to providing a flexible, user-friendly surveillance solution for large-scale and high-level enterprise projects as well as for small-and-medium business.