

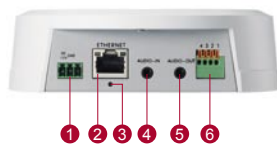
ACM-8511

IP D/N PoE PTZ Camera



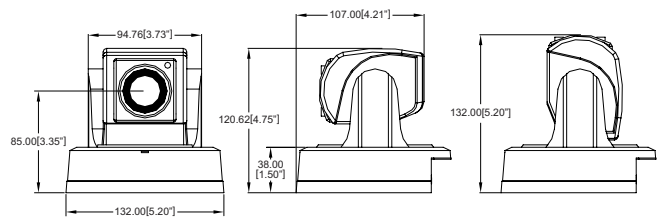
- 1/4" Interlaced Scan CCD
- Day and night function with Sense Up
- Minimum illumination 0.07 lux at F1.8
- 10 x optical zoom
- 25/30 fps at full D1 resolution
- Selectable MPEG-4 SP, MJPEG compressions
- Two-way audio
- Video motion detection
- Digital input and digital output
- Powered by PoE Class 3 / DC 12V
- ACM-8511N (NTSC) / ACM-8511P (PAL)

PHOTO INDICATION



- ① DC 12V Power Input
- ② Ethernet Port
- ③ Reset Button
- ④ Audio Input
- ⑤ Audio Output
- ⑥ Digital Input / Output

DIMENSION DIAGRAM



Unit: mm [inch]

ACCESSORY OPTIONS

Popular Mounting Solutions

| Surface | Accessories not required | |
|---------|-------------------------------------|--|
| Wall | PMAX-0308 | |
| Corner | PMAX-0101 PMAX-0303 PMAX-0402 | |
| Flush | PMAX-1001 PMAX-1002 | |
| Pendant | PMAX-0101 PMAX-0103 | |
| Pole | PMAX-0101 PMAX-0303 PMAX-0502 | |

* For more mounting solutions, please refer to Mounting Accessory section of Buyer's Guide or Project Planner v2.0 on www.acti.com

PRODUCT SPECIFICATION

ACM-8511

• Device

| | |
|--------------------------|--|
| Device Type | PTZ Camera |
| Image Sensor | Interlaced Scan CCD |
| Sensor Size | 1/4" (3.2 x 2.4 mm) |
| Day / Night | Yes |
| Minimum Illumination | Color: 2.5 lux at F1.8 (50 IRE, 5600 °K); B/W: 0.07 lux at F1.8 (50 IRE, 5600 °K, Max. AGC, Max. Sense Up) |
| Color to B/W switch | DSP based switch, configurable |
| Mechanical IR Cut Filter | No |
| IR Sensitivity Range | No |
| IR LED | No |
| Electronic Shutter | 1/100 - 1/10,000 sec (NTSC); 1/100 - 1/10,000 sec (PAL) (manual mode) 1/60 - 1/120,000 sec (NTSC); 1/50 - 1/120,000 sec (PAL) (auto mode) |

• Lens

| | |
|--------------------------|---------------------------------|
| Focal Length | Zoom, f4.2 - 42 mm / F1.8 - 2.9 |
| Iris | Auto iris |
| Focus | Auto Focus |
| Horizontal Viewing Angle | 48° - 5° |

• PTZ

| | |
|----------------------|---|
| Zoom Ratio | 10x optical; 10x digital |
| Manual Panning Speed | 20° ~ 90°/s |
| Manual Tilting Speed | 20° ~ 70°/s |
| Panning Range | 0° ~ 354° |
| Tilting Range | -25° ~ 90° |
| Control | Remote manual control; 32 preset points; 10 preset tours; auto scan |
| Absolute Position | Yes |

• Video

| | |
|-----------------------------------|--|
| Compression | MPEG-4 SP, MJPEG |
| Maximum Frame Rate vs. Resolution | 30 fps at 720 x 480 (Full D1, NTSC); 25 fps at 720 x 576 (Full D1, PAL); 30 fps at 640 x 480 (VGA, NTSC); 25 fps at 640 x 480 (VGA, PAL); 30 fps at 352 x 240 (CIF, NTSC); 25 fps at 352 x 288 (CIF, PAL); 30 fps at 160 x 112 (QCIF, NTSC); 25 fps at 176 x 144 (QCIF, PAL) |
| Multi-Streaming | Multiple streams based on single configuration |
| Bit Rate | 28 Kbps - 3 Mbps (per stream) |
| Bit Rate Mode | Constant, Variable |
| S/N Ratio | More than 44 dB |
| Image Enhancement | Backlight compensation; White balance: automatic, predefined and manual; Brightness; Saturation; Contrast; Automatic gain control; Auto exposure: automatic, predefined and manual |
| Privacy Mask | 1 configurable region |
| Text Overlay | User defined text on video |
| Image Orientation | Image flip and mirror |

• Audio

| | |
|-------------|-----------------------------------|
| Compression | 8 kHz, Mono, PCM, 16 bit encoding |
| Audio-In | 3.5 mm Phone Jack |
| Audio-Out | 3.5 mm Phone Jack |

• Network

| | |
|--------------------|---|
| Protocol & Service | TCP, UDP, HTTP, HTTPS, DHCP, PPPoE, RTP, RTSP, DNS, DDNS, NTP, ICMP, ARP, IGMP, SMTP, FTP, UPnP, SNMP, Bonjour |
| Ethernet Port | 1, Ethernet (10/100Base-T), RJ-45 connector |
| Security | IP address filtering; HTTPS encryption; Password protected user levels |

• Alarm

| | |
|----------------|---|
| Alarm Trigger | Video motion detection (3 regions); External device through digital input |
| Alarm Response | Notify control center; Go to PTZ preset point or preset tour; Change camera settings; Command other devices; E-mail notification with snapshots; Upload video, snapshot to FTP server; Activate external device through digital output |

• Interface

| | |
|----------------|------------------------|
| Digital Input | 1, TTL, terminal block |
| Digital Output | 1, TTL, terminal block |

• General

| | |
|----------------------------|---|
| Power Source / Consumption | PoE Class 3 (IEEE802.3af) / 5.8 W; DC 12V / 4.8 W |
| Weight | 550 g (1.21 lb) |
| Dimensions (Ø x H) | 132 mm x 132 mm (5.20" x 5.20") |
| Mount Type | Surface, Flush, Wall, Pendant, Pole, Corner |
| Operating Temperature | 0 °C ~ 45 °C (32 °F ~ 112 °F) |
| Approvals | CE, FCC |

• Integration

| | |
|-------------------------|--|
| Unified Solution | Fully compatible with ACTi software |
| ISV Integration | Software Development Kit (SDK) available |
| Firmware Access Browser | Microsoft Internet Explorer 6.0 or newer |