

NVR 4000-4KS2/I WizSense NVR Series

Bring AI closer to You

NVR4000-4KS2/I Promotion

-  **Overview**
-  Features
-  Product Portfolio
-  Product Comparison




NVR4000-4KS2/I series adopts more advanced chipset which delivers more powerful decoding capacity than old model and embedded with back end AI feature like face recognition, perimeter protection, SMD plus. Which brings a more cost effective way to customer to benefit from AI technology.

NVR4416-4KS2/I
NVR4416-16P-4KS2/I
NVR4432-4KS2/I
NVR4432-16P-4KS2/I
NVR4816-4KS2/I
NVR4816-16P-4KS2/I
NVR4832-4KS2/I
NVR4832-16P-4KS2/I

Replace

NVR4416-4KS2
NVR4416-16P-4KS2
NVR4432-4KS2
NVR4432-16P-4KS2
NVR4816-4KS2
NVR4816-16P-4KS2
NVR4832-4KS2
NVR4832-16P-4KS2

NVR4000-4KS2/I Promotion

-  Overview
-  **Features**
-  Product Portfolio
-  Product Comparison

More powerfull decoding capacity



With the help of the new CPU embedded, the **NVR4000-4KS2/I** have a more strong decoding capacity than old series, the maximum decoding resolution can reach up to 16MP@20fps, and 10×1080P@30fps(AI Off). And the incoming/storage/forwarding bandwidth also upgrade to 256Mbps/256Mbps/256Mbps.

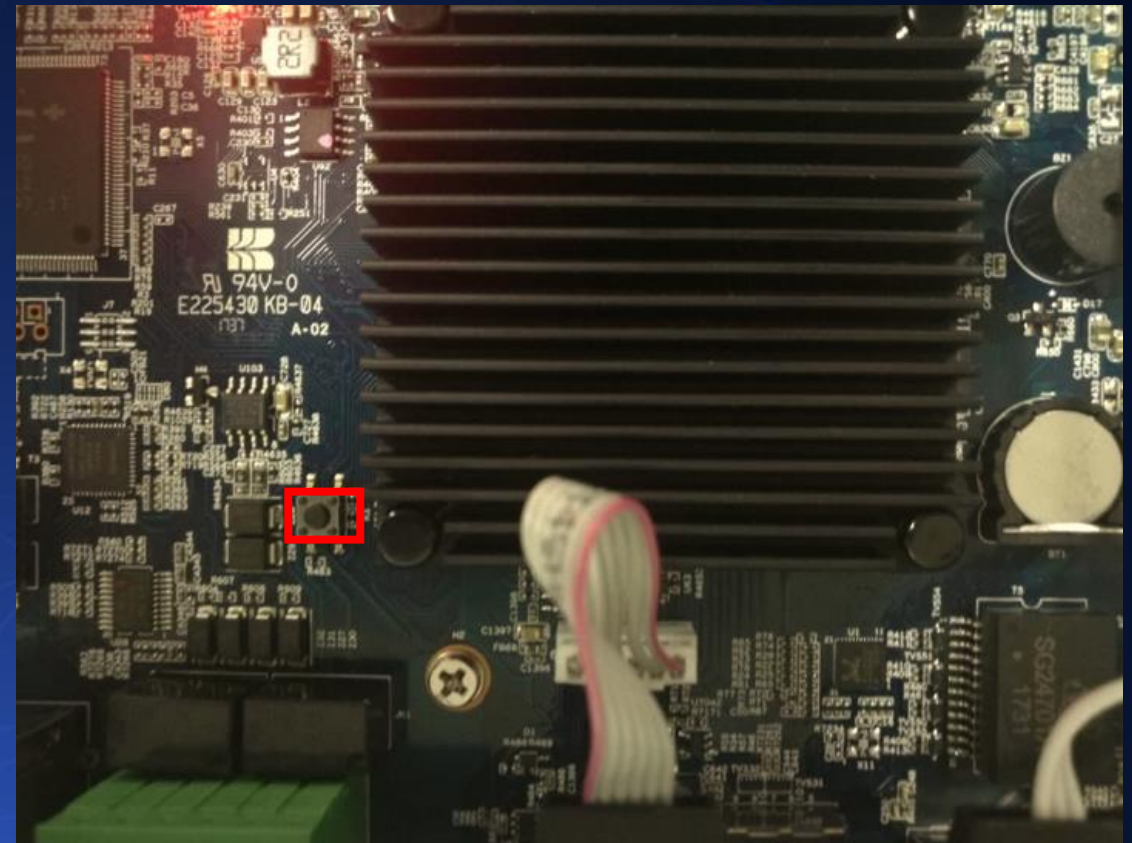


Hardware reset button

In order to reduce the complaint from customer about the password reset, all new **NVR4000-4KS2/I** series are embedded with hardware reset button which provide a more easy way to customer to reset their password.

- **How to realize?**

- Press the reset button
- Power on the device while the reset button is pressed
- Continue to press the reset button for more than 5s
- The device will automatically restart as factory default
- Videos in HDD will not be deleted



VGA/HDMI Independent Output



All **NVR4000-4KS2/I** series support VGA/HDMI simultaneous/heterogeneous video sources output configurable, which help the end users much more easy to have more channels monitoring on two screens.

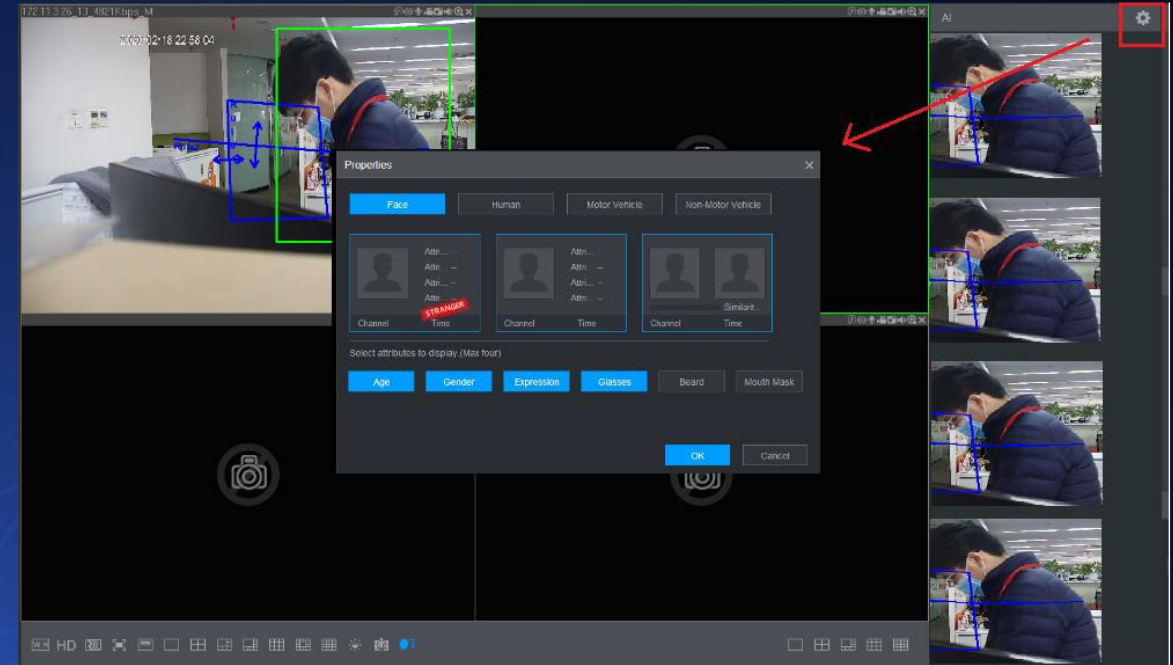
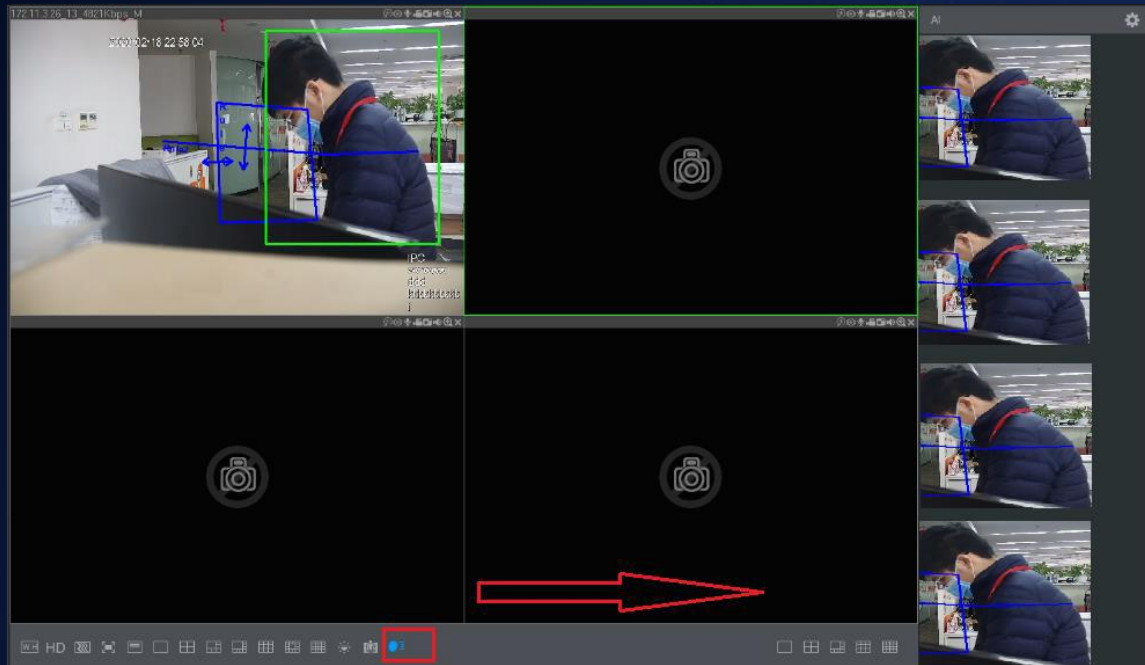


AI Panel on local and web



NVR4000-4KS2/I support AI Panel on local and web, which helps to display more intelligent event information not only on local interface but also on Web.

Attentions: For web interface, browsers below IE8 and no plugin version are not support.

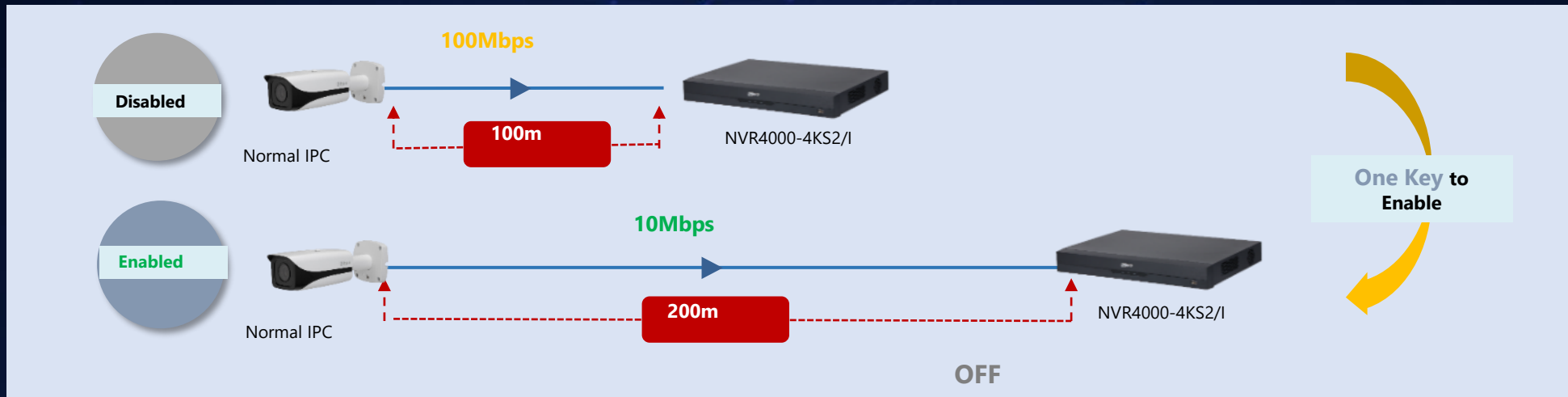


Enhancement Mode



The brand new enhanced mode function makes it possible for POE long-distance transmission between **NVR4000-4KS2/I** to normal IPC, which extends the transmission distance up to 200m by reducing transmission bandwidth. And the maximum power budget at 200m is around 23W.

What's more, the real time power consumption of each channel is displayed on the interface. Once the system detects the total power consumption exceeds the threshold, it begins to disconnect device one by one according to the port No. (N ->1).System stops disconnecting when the total power consumption is restored to rated power.



Connected Total	1/8	Actual/Total Power(W)	3.5/4.8	
Status	Port	Enhancement Mode	Rate(Mbps)	Power(W)
●	1	Off	100	3.5
●	2	Off	-	-
●	3	Off	-	-
●	4	Off	-	-
●	5	Off	-	-
●	6	Off	-	-
●	7	Off	-	-
●	8	Off	-	-

Note:
1. About icon: for PoE connection status, green circle means the device is connected and red circle means the device is disconnected;
2. Power protection function: Once the system detects the connected total power consumption exceeds the threshold, it begins to disconnect device one by one according to the port number (N - 1). System stops disconnecting when the total power consumption is restored to rated power.

Rate(Mbps)	Power(W)
100	3.5
10	3.5

OFF

ON

Face Recognition

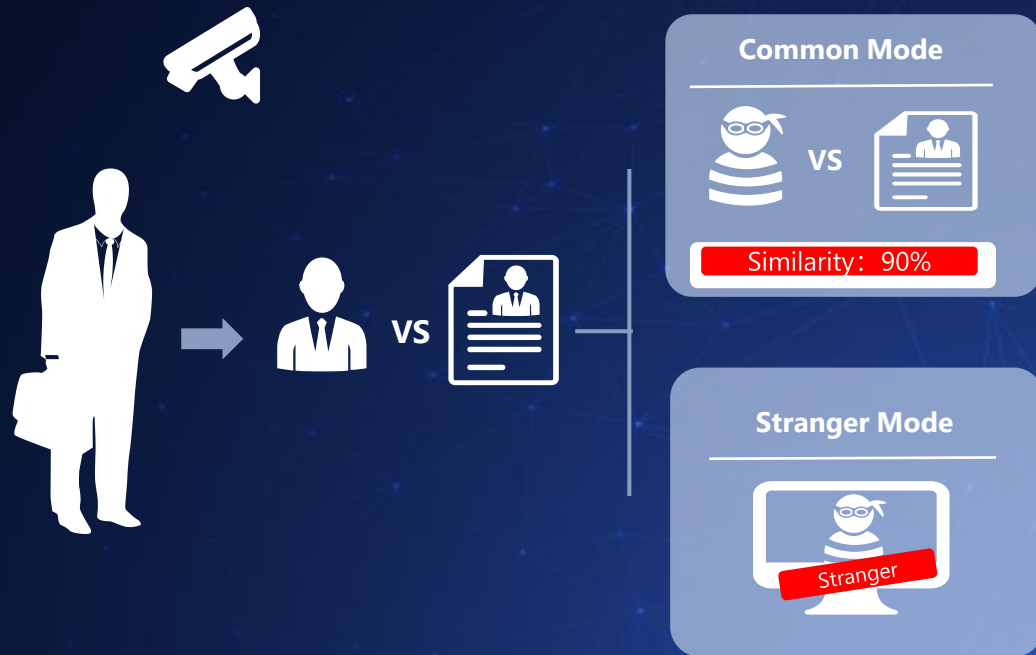


Dahua Face Recognition could alarm for suspects on blacklist, allow passing for authorized people on whitelist, also alert for approaching of strangers.

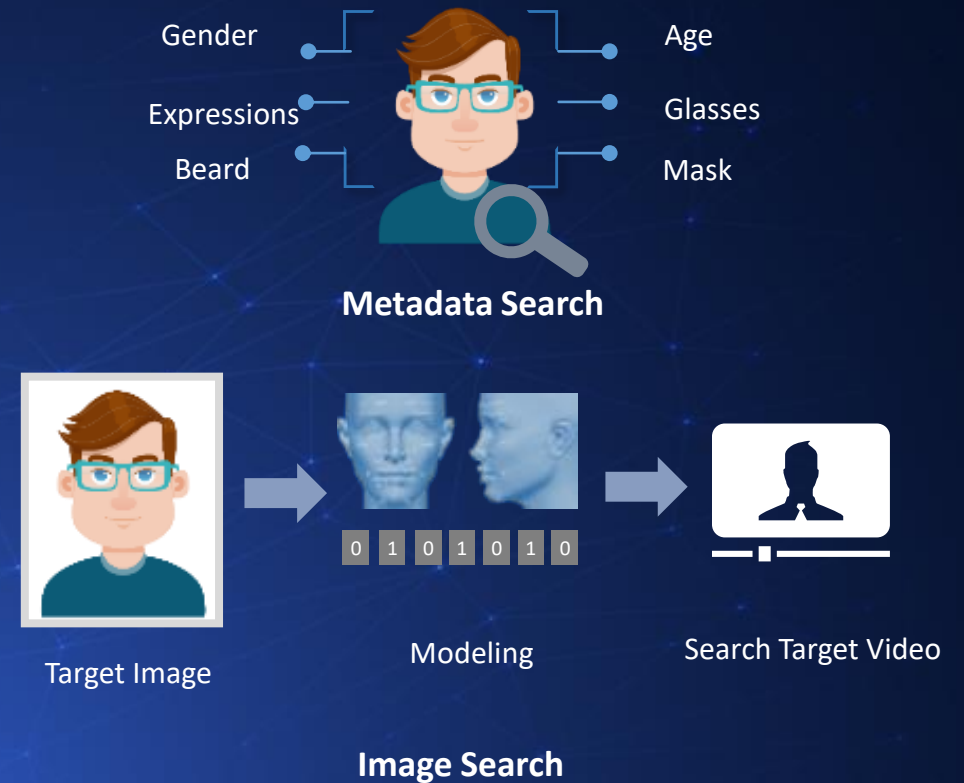
Constituted with feature attribute information extracted from target faces, metadata makes it possible to do AI search by comparison between the modeled object and database or matching with identity characteristics, which significantly enhances accuracy and efficiency.

◆ **NVR4000-4KS2/I** supports up to **1 channels** video stream face recognition or **4 pictures/sec** processing (AI by device).

Real-time Face Recognition



AI search

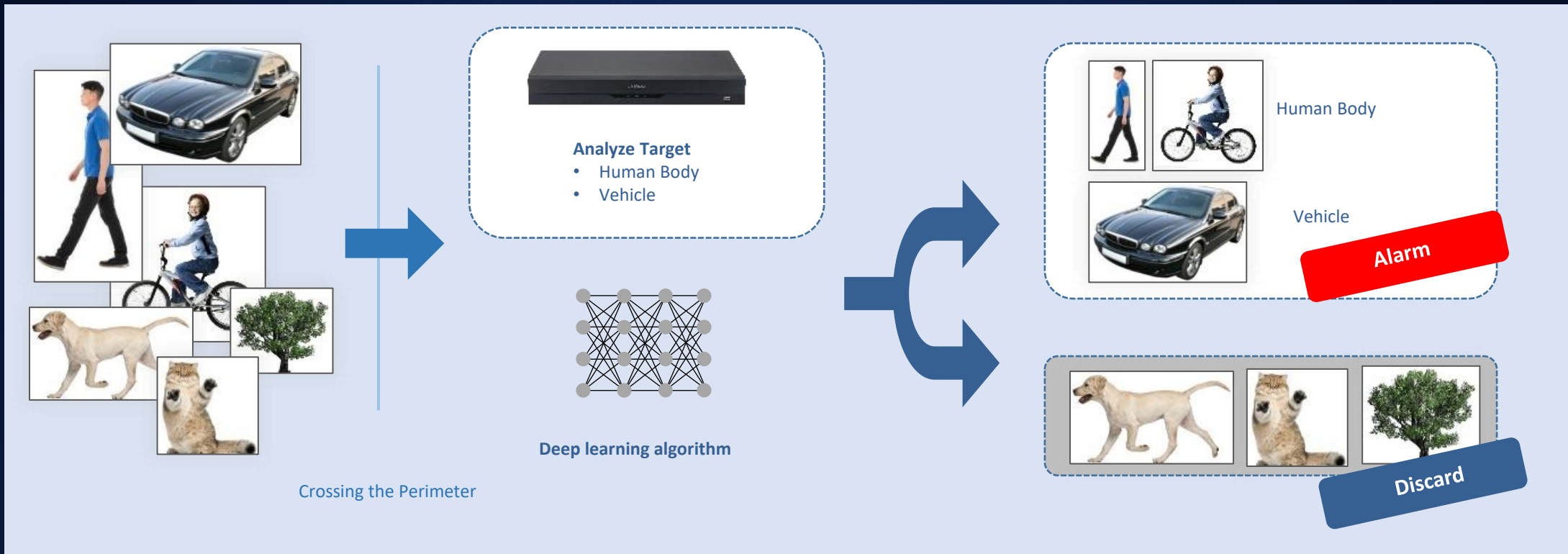


Perimeter Protection



Perimeter protection function can realize human and vehicle classification, reducing false alarm caused by animals, camera shaking, grasses or other irrelevant objectives with higher precision.

- ◆ **NVR4000-4KS2/I** supports up to **2 channels** perimeter protection. (AI by device)



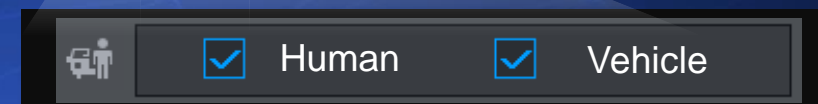
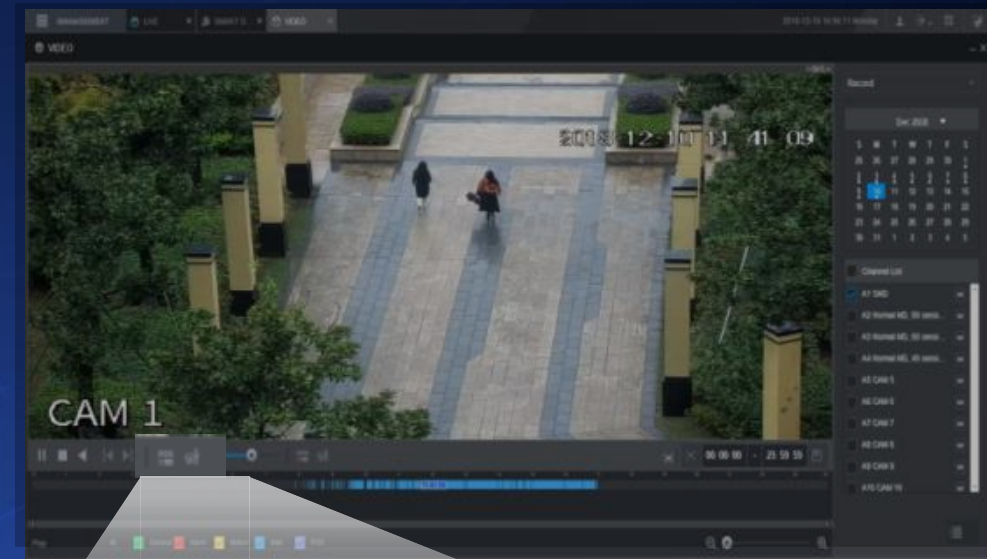
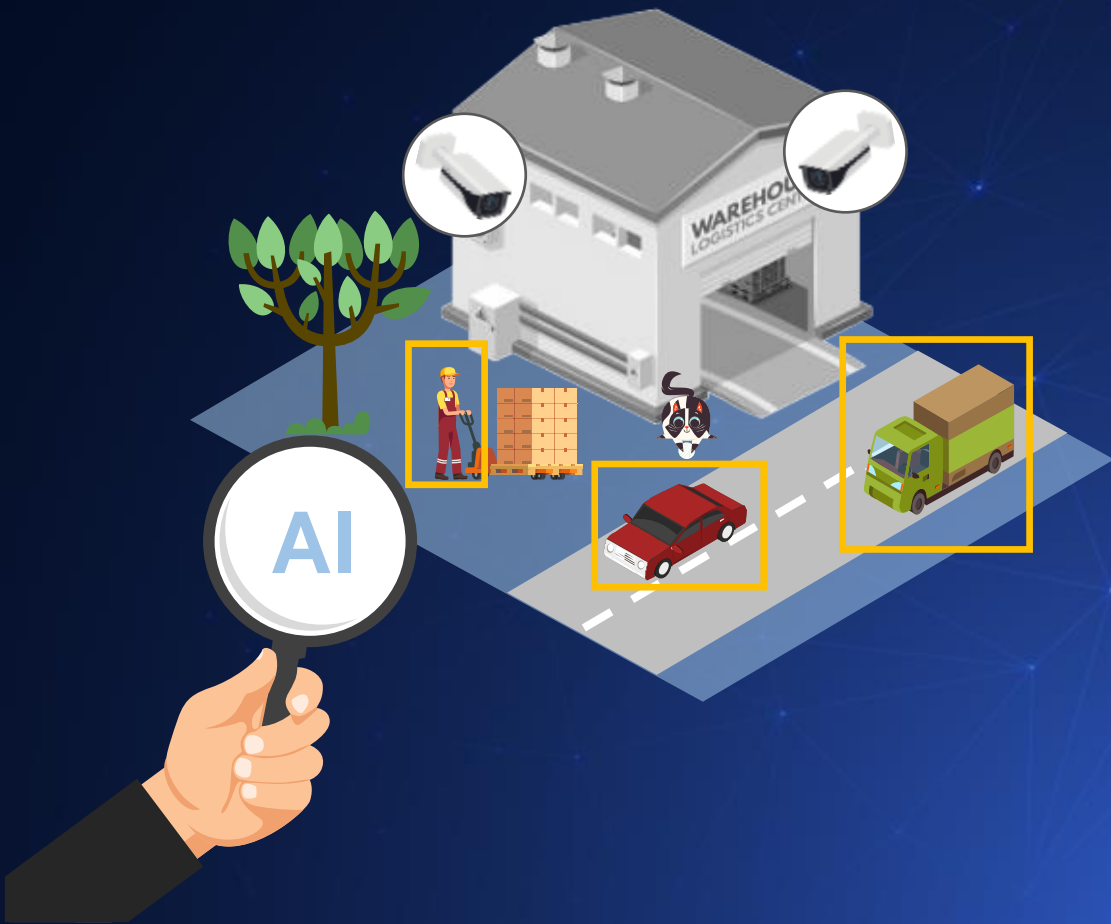
SMD Plus



SMD Plus, referred to as **Smart Motion Detection Plus**, analyzes human and vehicle shapes based on motion detection through the adoption of a deep learning algorithm.

Dahua SMD Plus filters the motion detection alarm triggered by non-concerned targets and recognizes humans and vehicles effectively, sending alarms when humans and vehicles intrude, allowing users to focus on real threats.

◆ **NVR4000-4KS2/I** supports up to **4 channels** SMD.



Human and vehicle options for quick search!

Support SMD with Third party camera (AI by device)



With the new SMD algorithm help, the new **NVR4000-4KS2/L** series support SMD based on Third Party cameras, this is because new SMD algorithm are based on motion detection by NVR not motion detection by camera(Private protocol).

◆ **NVR4000-4KS2/I** supports up to 4 channels SMD.



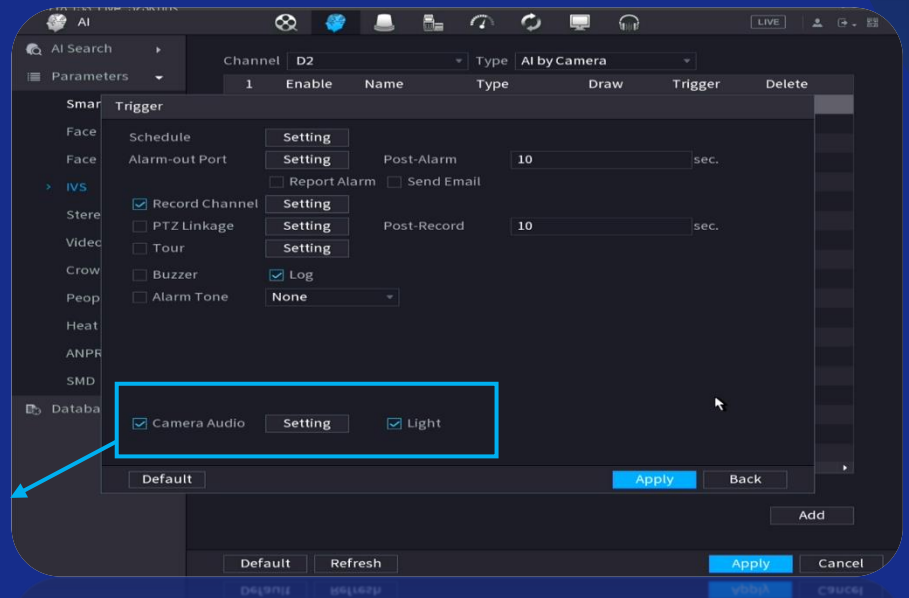
SMD/Intrusion/Tripwire Trigger Camera Audio/Light



① Video analysis shows there is a human (or vehicle) in the monitored scene.



② The camera flashes and makes a warning sound to deter the intruder.

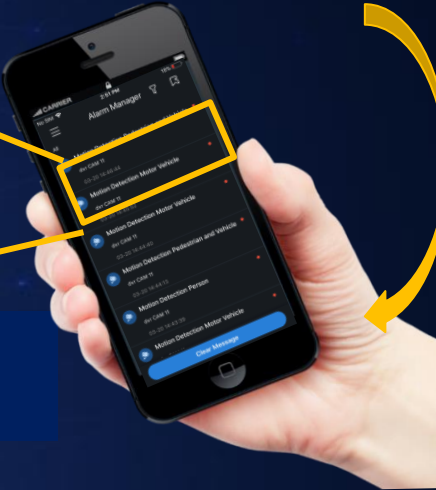


Click the Setting to set the audio tone and play times (DMSS can upload the customized tone to IPC)

Alarm receiving time < 1s



③ Users receive alert by DMSS instantly



Other Features



Heat Map by Camera



Heat Map function show which area is the hottest motion, help customer to do business analysis.



People Counting by Camera



People counting can show the people flow in the entrance/exit. It can be widely used in retail, shopping centers, libraries and etc.



ANPR by Camera



Recording : Get vehicle plate pictures and stream from ANPR camera, storage snapshots and video.
B/W List : Add White/Black vehicle plate numbers.
Supports ANPR list import/export
Smart Play : Search video and images by date/time/license plate.

NVR4000-4KS2/I Promotion

-  Overview
-  Features
-  **Product Portfolio**
-  Product Comparison

Product List



NVR4416-4KS2/I
 NVR4416-16P-4KS2/I
 NVR4432-4KS2/I
 NVR4432-16P-4KS2/I



NVR4816-4KS2/I
 NVR4816-16P-4KS2/I
 NVR4832-4KS2/I
 NVR4832-16P-4KS2/I

Key Features



SMD Plus

- Up to **4** channel SMD by device
- Up to **16** channel SMD by camera
- Third party camera SMD by device



Perimeter Protection

- Up to **2** channel Perimeter Protection by device
- Up to **8** channel Perimeter Protection by camera



Face Recognition

- Support **1** channel video stream
- Support **10 databases** with up to **20,000** face images

Item	Parameter
Channel No.	16/32CH
HDD	4/8HDD
Max Decoding	AI off: 1 channel × 16MP@20 fps; 1 channel × 12MP@20 fps; 2 channels × 8MP@30 fps; 4 channels × 5MP@30 fps; 5 channels × 4MP@30 fps; 10 channels × 1080p@30 fps AI on: 1 channel × 16MP@20 fps; 1 channel × 12MP@20 fps; 2 channels × 8MP@30 fps; 3 channel × 5MP@30 fps; 4 channels × 4MP@30 fps ; 8 channels × 1080p@30 fps
Input/Record/Forwarding (AI function enabled/disable)	256Mbps(160Mbps when AI function enabled)
Display	
1.5U, 2U Model	1HDMI,1VGA
Max Resolution	4K
Ethernet	1.5U 2U : 1*1000M

NVR4000-4KS2/I Promotion

-  Overview
-  Features
-  Product Portfolio
-  **Product Comparison**

Competitor Comparison



					
Function		NVR4400-4KS2/I	NVR4800-4KS2/I	DS-77XXNI-K4	DS-86XXNI-K8
Performance	Input/Record/Forward	256Mbps (160 Mbps when AI function enabled) 	256Mbps (160 Mbps when AI function enabled) 	160Mbps/160Mbps (16ch model) 256Mbps/160Mbps(32ch Model)	160Mbps/160Mbps (16ch model) 256Mbps/160Mbps(32ch Model)
	Decoding	 10ch@1080P 30fps (AI Off)	 10ch@1080P 30fps (AI Off)	8ch@1080P 30fps	8ch@1080P 30fps
	Max Redording Resolution	 16M	 16M	8M	8M
	IP Video Input	16/32CH	16/32CH	16/32CH	16/32CH
Hardware	HDD	4/8HDD	4/8HDD	4/8HDD	4/8HDD
	Display Output	4K	4K	4K	4K
	HDMI/VGA	1/1	1/1	1/1	2/2
	Audio	1/1	1/1	1/1	1/1
	Alarm	4/8HDD : 16/6	4/8HDD : 16/4	4/8HDD : 16/4	4/8HDD : 16/4
AI Function	Face Recognition	 1 channel video stream Max 4 face pictures/sec processing	 1 channel video stream Max 4 face pictures/sec processing	/	/
	Perimeter Protection	 2 channels	 2 channels	/	/
	SMD	 4 channels	 4 channels	/	/

Parameter



Function		NVR4000-4KS2/I	NVR44/48-4KS2
Performance	Input/Record/Forward	256Mbps (160 Mbps when AI function enabled)	200 Mbps
	Decoding	10ch@1080P 30fps (AI Off)	8ch@1080P 30fps
	Max Resolution	16M	8M
	IP Video Input	16/32CH	16/32/64CH
Hardware	HDD	4/8HDD	4/8HDD
	Display Output	4K	4K
	HDMI/VGA	1/1	1/1
	Audio	1/1	1/1
	Alarm	4/8HDD : 16/6	4/8HDD : 16/4
	Ethernet	1*1000M	1*1000M
	Hardware Reset	Yes	No
	Buzzer	Yes	Yes
	Network Function	EMAIL	Yes
SNMP	Yes	Yes	
Multicast	Yes	Yes	
Alarm Center	Yes	Yes	
Active Registration	Yes	Yes	
3G/WiFi	Yes	Yes	
DDNS	Yes	Yes	
UPnP	Yes	Yes	

Function		NVR4000-4KS2/I	NVR44/48-4KS2	
AI Function	Face Recognition	1 channel video stream face recognition;	\	
		Max 4 face pictures/sec processing	\	
		Up to 10 face databases with 20,000 face image in total	\	
	Metadata	\	\	
	Perimeter Protection	2 channels	\	
	SMD	4 channels	\	
	People Counting	16 Channels	\	
		Tripwire people counting: 200,000 items	Tripwire people counting: 200,000 items	
		Regional people counting: 1,000,000 items;	Regional people counting: 1,000,000 items;	
		Heat Map	Yes	Yes
		ANPR	4 Channels	\
		POS	\	\
	Storage Function	Fisheye Dewarp(Local)	\	\
		Fisheye Dewarp(Web)	\	\
	FTP	Yes	Yes	
RAID	\	\		
WEB	0 Channel	Yes	Yes	
Others	Multi-Sensor splicing Camera	Yes	Yes	
	AI panel	Yes	\	
	Multi-Sensor Camera (No splice)	Yes	\	

ENABLING A SAFER SOCIETY AND SMARTER LIVING