



DH_NVR5XXX-EI_MultiLang_ V4.000.0000000.2.R.230928.zip

Release Notes



Legal Information

Copyright

© 2023 ZHEJIANG DAHUA VISION TECHNOLOGY CO., LTD. All rights reserved.

This document cannot be copied, transferred, distributed, or saved in any form without the prior written permission of Zhejiang Dahua Vision Technology Co., LTD (hereinafter referred to as "Dahua").

The products described in this document may contain the software that belongs to Dahua or the third-party. Without the prior written approval of the relevant owner, any person cannot (including but not limited to) copy, distribute, amend, abstract, reverse compile, decode, reverse engineer, rent, transfer, sublicense the software.

Trademarks

The image shows four variations of the Dahua Technology logo: the standard logo, a logo with a red underline, a logo with a red circle around the 'a', and a logo with a red square around the 'a'. These are followed by the text "and HDCVI are the trademarks or registered trademarks of Dahua."

All other company names and trademarks mentioned herein are the properties of their respective owners.

Disclaimer

- This document is provided "as-is". Unless applicable law requires, nothing herein should be constructed as constituting any express or implied warranty.
- Information and views expressed in this document might change without prior notice.
- If there is any uncertainty or controversy, we reserve the right of final explanation.

Table of Contents

Legal Information	I
1 Release Notes	1
1.1 Overview	1
1.2 New Features	1
1.3 Description of New Features	2
1.3.1 AcuPick on Webpage	2
1.3.2 Optimized AcuPick	4
1.3.3 Region of Interest (ROI) Target Thumbnail	8
1.3.4 EPTZ Linkage	10
1.3.5 Multi-channel TiOC Alarm Linkage	12
1.3.6 Adjusting IPC Volume	14
1.3.7 Displaying ABR	14
1.3.8 Configuring Illuminator Plan	15
1.3.9 Displaying AcuPick Algorithm Version	15
1.3.10 Connecting Imou Cameras through ONVIF	16
1.4 Fixed Bugs	17
1.5 Compatibility	17
1.5.1 Program	17
1.5.2 Browser	17
1.5.3 Third-party Access	17
1.6 Software Environment	17
1.7 Pending Issues	23
1.8 Update Guide	23

1 Release Notes

1.1 Overview

Product name	Network Video Recorder
Version	V4.000.0000000.2
Software package information	DH_NVR5XXX-EI_MultiLang_V4.000.0000000.2.R.230928.zip
ONVIF version	Client: 2.4.1 Server: 22.12
Model	DHI-NVR5208-EI, DHI-NVR5216-EI, DHI-NVR5232-EI, DHI-NVR5416-EI, DHI-NVR5432-EI, DHI-NVR5464-EI, DHI-NVR5816-EI, DHI-NVR5832-EI, DHI-NVR5864-EI, DHI-NVR5016-EI, DHI-NVR5032-EI, DHI-NVR5064-EI, DHI-NVR5208-8P-EI, DHI-NVR5216-8P-EI, DHI-NVR5232-8P-EI, DHI-NVR5216-16P-EI, DHI-NVR5232-16P-EI, DHI-NVR5416-16P-EI, DHI-NVR5432-16P-EI, DHI-NVR5464-16P-EI, DHI-NVR5816-16P-EI, DHI-NVR5832-16P-EI, DHI-NVR5864-16P-EI, DHI-NVR5216-16HP-EI
OS requirement	None
Release date	September 28, 2023

1.2 New Features

No.	Feature	Description
1	AcuPick on Webpage	Perform AcuPick in browsers such as Chrome65, Firefox65, Edge79 and Safari15. AcuPick cannot be used in IE11.
2	Optimized AcuPick	Perform AcuPick in instant playback, AI live, and playback based on AI search. Perform AcuPick in multiple window splits during live view and playback. Perform AcuPick by importing images.
3	EPTZ Linkage	Enable and disable the EPTZ linkage mode configuration and display on the live page. Enable and disable the EPTZ linkage mode configuration and display on the playback.
4	Multi-channel TiOC Alarm Linkage	TiOC configuration for multiple channels can be linked to events.

No.	Feature	Description
5	Region of Interest (ROI) Target Thumbnail	Draw an detection area in single window split to search for the target that passed the area. View the target image on the thumbnail list on the right, and select the image to perform AcuPick and backup.
6	IPC Volume Adjustment	Adjust IPC volume.
7	ABR (Average Bit Rate)	Configure ABR for the cameras.
8	Illuminator Plan Configuration	Configure illumination plans for different camera status.
9	AcuPick Algorithm Version Display	View AcuPick algorithm version in System Info.
10	Connecting Imou Cameras through ONVIF	Connect Imou cameras to the NVR through ONVIF protocol. Private protocols are not supported.

1.3 Description of New Features

1.3.1 AcuPick on Webpage



AcuPick cannot be used on Internet Explorer 11.

1.3.1.1 Freezing the Image

Procedure

- Step 1 Select a channel, and click the AcuPick icon. The video image of the channel is frozen.
- The target is automatically detected on the image and the target box is displayed. Move the mouse pointer to the target. The target box is highlighted and the search button is displayed. Click the search button or double click to search for the target.

Figure 1-1 Freeze the image

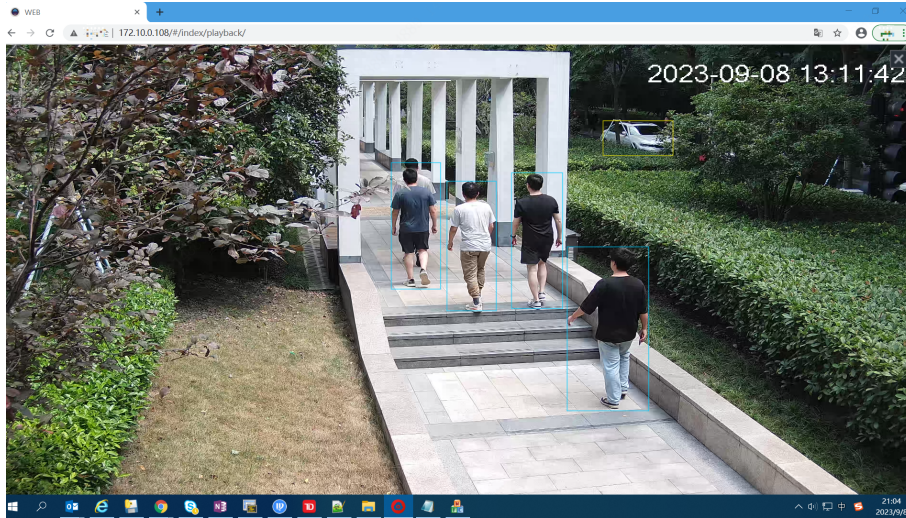


Figure 1-2 Search on live page on the webpage

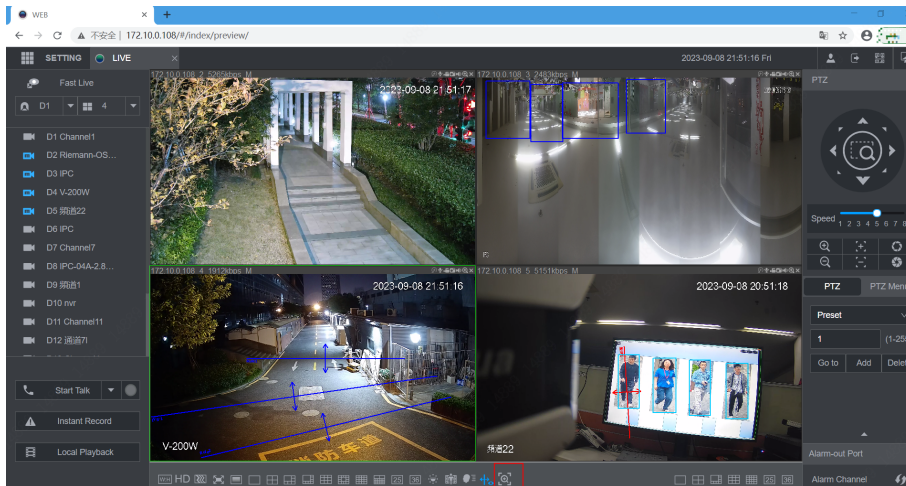
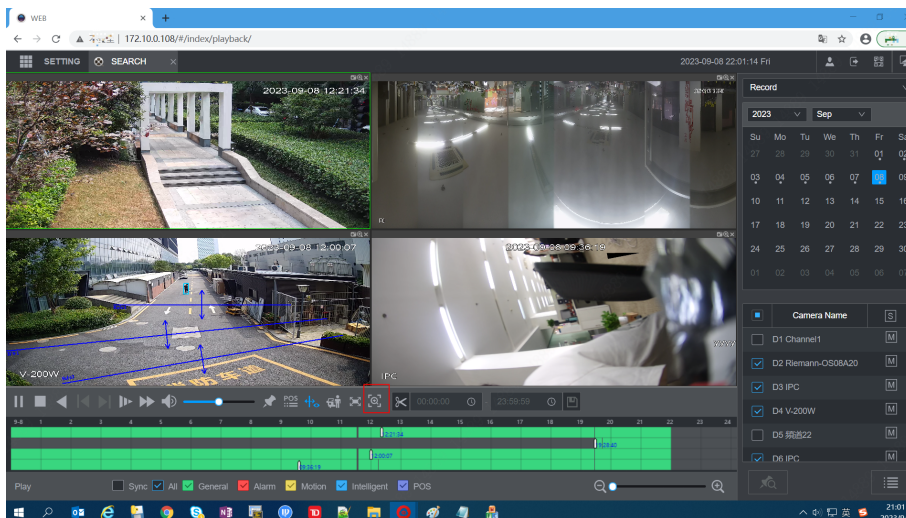


Figure 1-3 Search during playback on the webpage



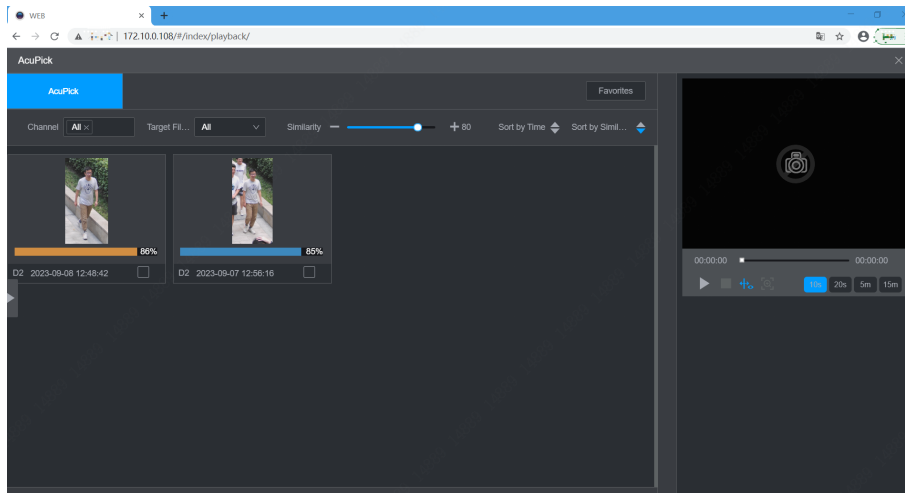
- Move the mouse pointer to the outside of the target box and click to manually select the area. After you finish drawing the area, click the search button to search for the target.

Step 2 After you select the target, click the search button or double click the target box to perform AcuPick.

1.3.1.2 Displaying Search Results

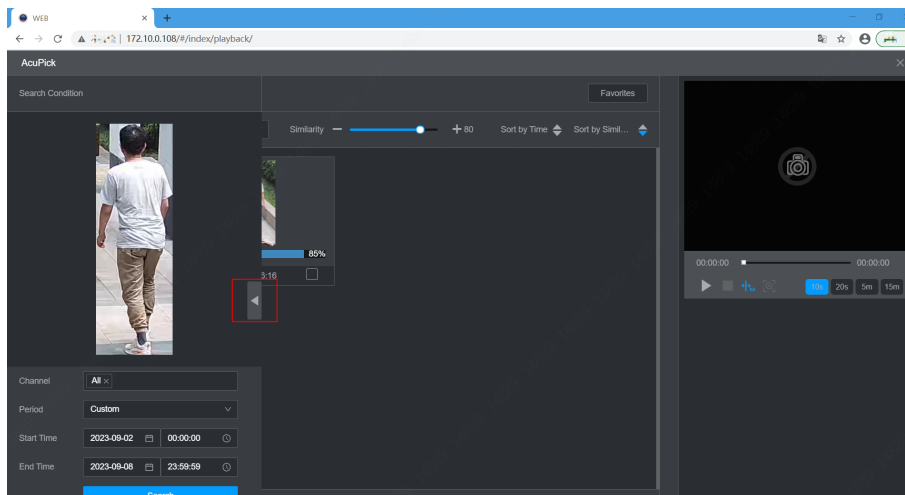
Found targets with a similarity greater than 80% for all channels are displayed by default.

Figure 1-4 Display AcuPick results



Click the right triangle icon to view the search conditions such as channel and time. You can adjust the search conditions to search for the target again. Click the left triangle icon to hide the search conditions.

Figure 1-5 Display or hide search conditions



1.3.2 Optimized AcuPick

Perform AcuPick in instant playback, AI live, and playback based on AI search.

Perform AcuPick in multiple window splits during live view and playback.

Perform AcuPick by importing images.

1.3.2.1 Adding AcuPick Button in Instant Playback, AI Live, and Playback Based on AI Search

AcuPick in Instant Playback

Figure 1-6 AcuPick in instant playback



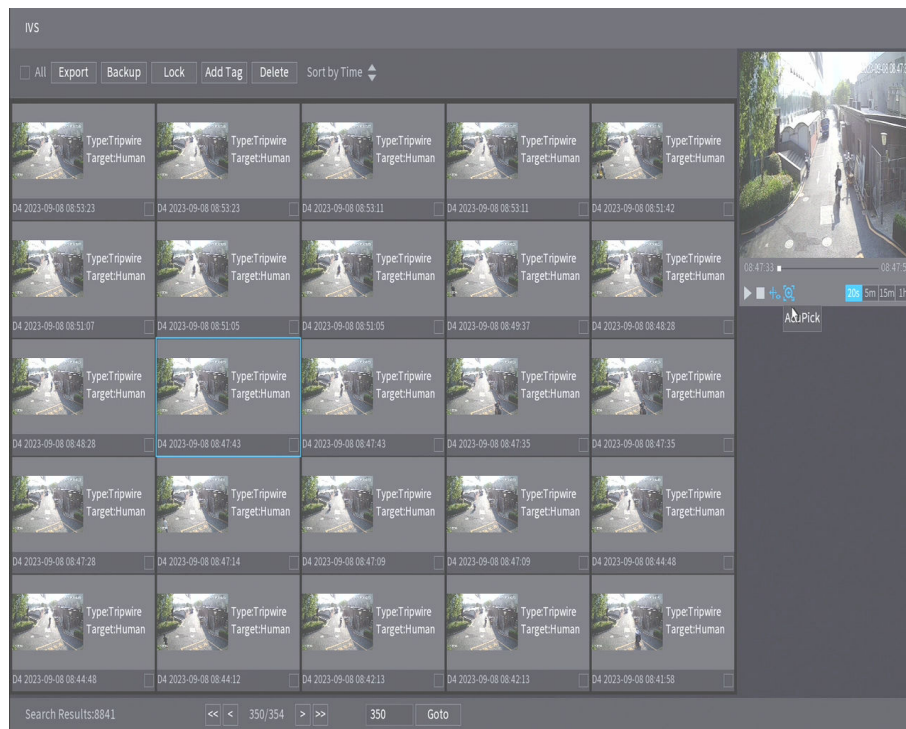
AcuPick in AI Live

Figure 1-7 AcupPick in AI Live



AcuPick in Playback Based on AI Search

Figure 1-8 AcuPick in playback based on ai search



1.3.2.2 Performing AcuPick in Multiple Window Splits during Live View and Playback

Figure 1-9 AcuPick in multiple window splits during live view

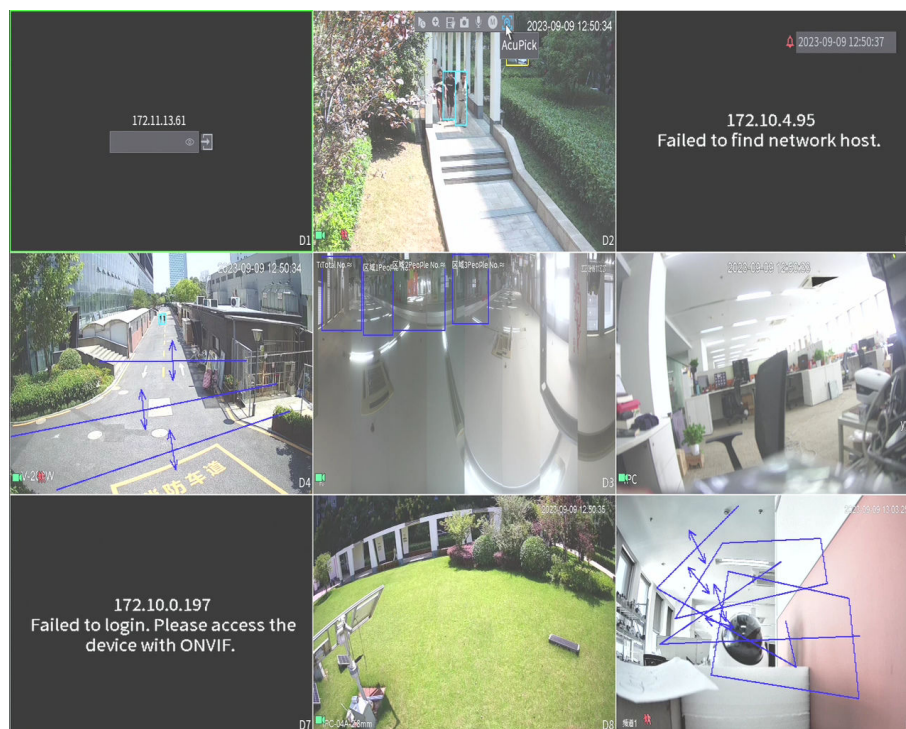
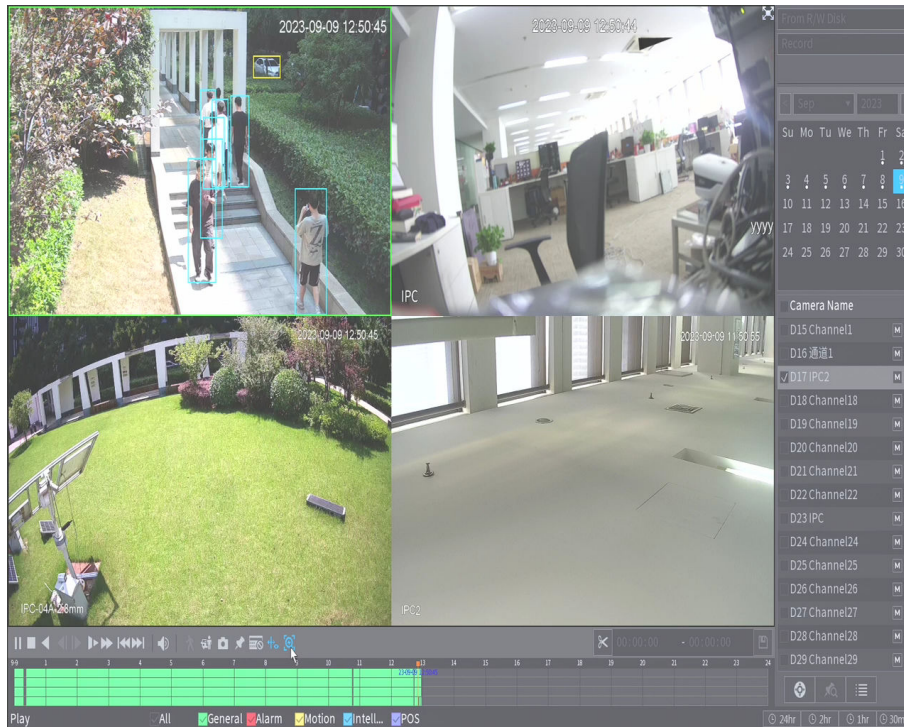


Figure 1-10 AcuPick in multiple window splits during playback



1.3.2.3 Performing AcuPick by Importing Images

Select **AI > AI Search > AcuPick**, click **Local Upload** to import images from external devices. The device automatically extracts and displays human bodies and motor vehicles in the images. Select the target that you want to search for, configure the search conditions and search for the target.

Figure 1-11 Import images from external devices

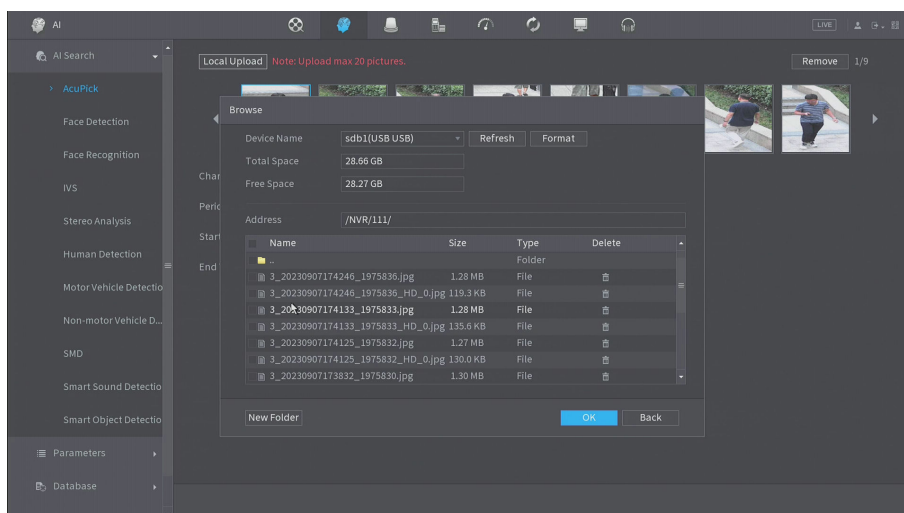


Figure 1-12 Select the target image and search conditions

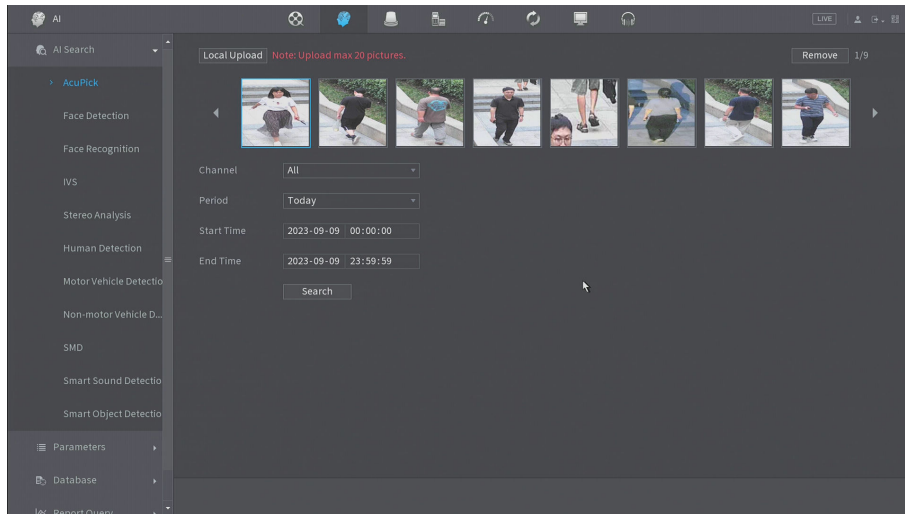
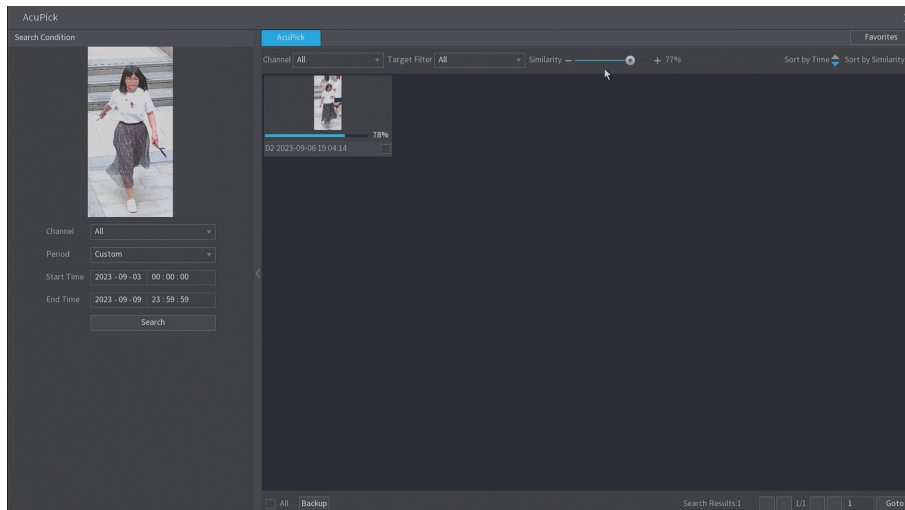


Figure 1-13 View search result



1.3.3 Region of Interest (ROI) Target Thumbnail

1. Select and search for the target (human or motor vehicle). The video time with this target is displayed on the timeline.

Figure 1-14 Select target

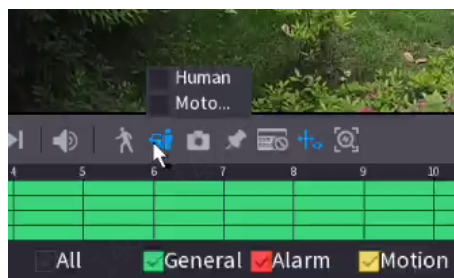
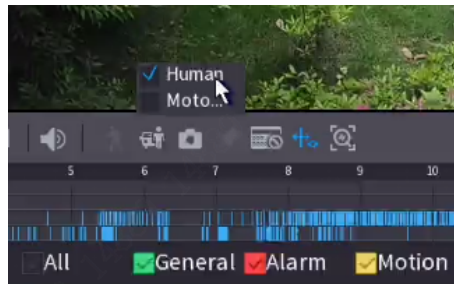


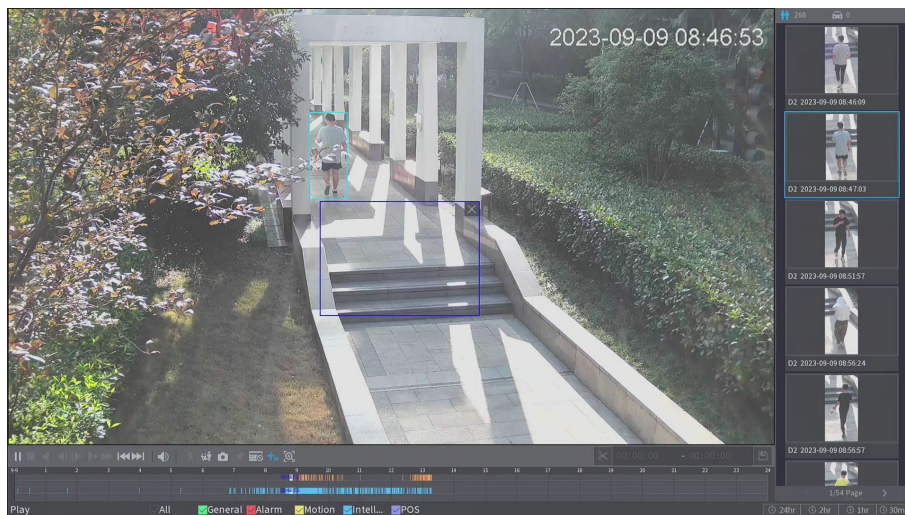
Figure 1-15 Filter target



2. When the image is switched to single window split, you can draw and edit the detection area. Click the search button to filter the targets passing the detection area again. When targets are found, the color of the corresponding time point on the timeline will turn orange.

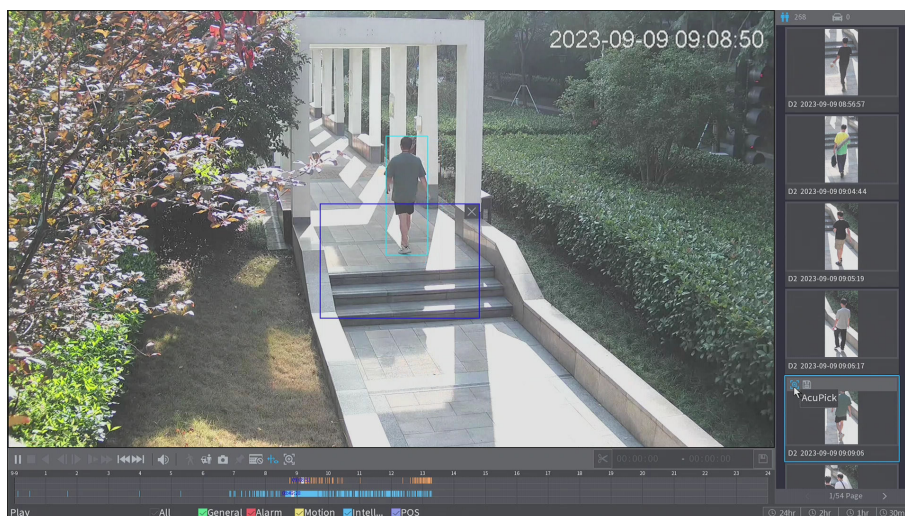
If the targets have small images, the image list is displayed on the right. If they do not have small images, the calendar and file list are displayed there.

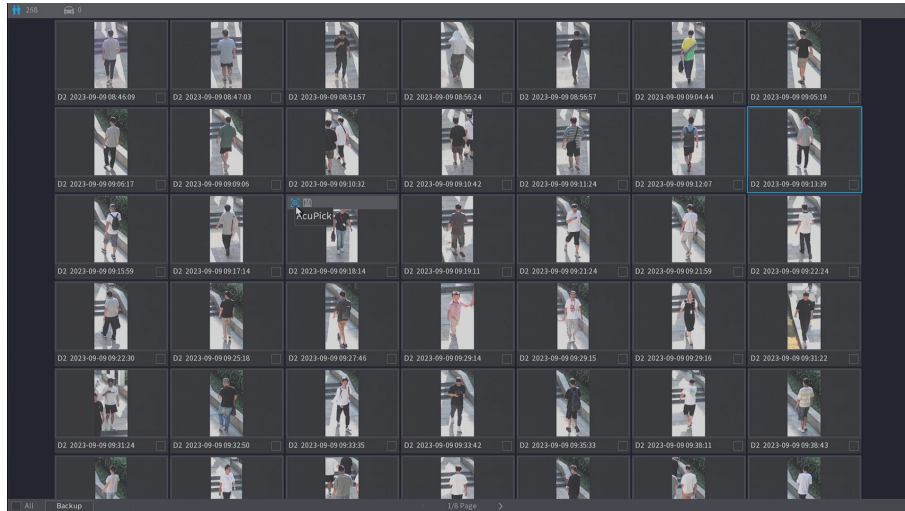
Figure 1-16 Target small image



3. Select the small image of the target to perform AcuPick or backup.

Figure 1-17 Select small image to perform AcuPick



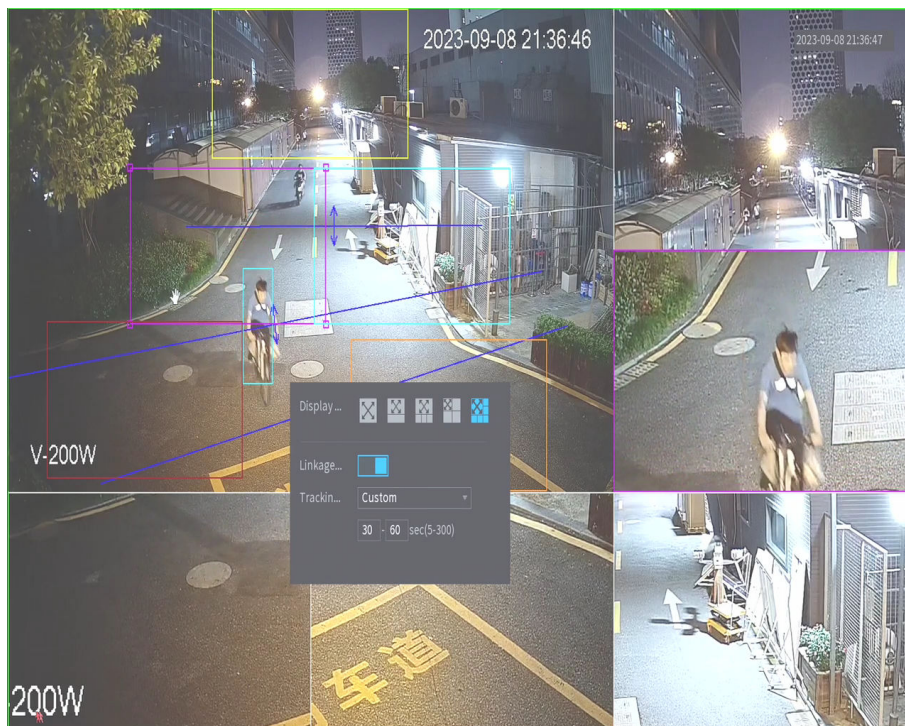


1.3.4 EPTZ Linkage

1.3.4.1 EPTZ Linkage on Live Video

On the Live page, select a channel, right-click to open the main menu, enable EPTZ and Linkage to enter the configuration page.

Figure 1-18 EPTZ linkage



Configure the mode and select the number of channels for tracking. You can select from full screen, 1+1, 1+3 and 1+5. It is full screen by default.

You can edit the detection box to zoom in or out or move it.

Enable linkage tracking to track AI events. The function is disabled by default.

Select **Continue till object disappears** or **Custom** for the tracking duration.

The effect of EPTZ configuration is displayed in real time on the live page.



You cannot enable, disable or configure EPTZ for PTZ camera channels.

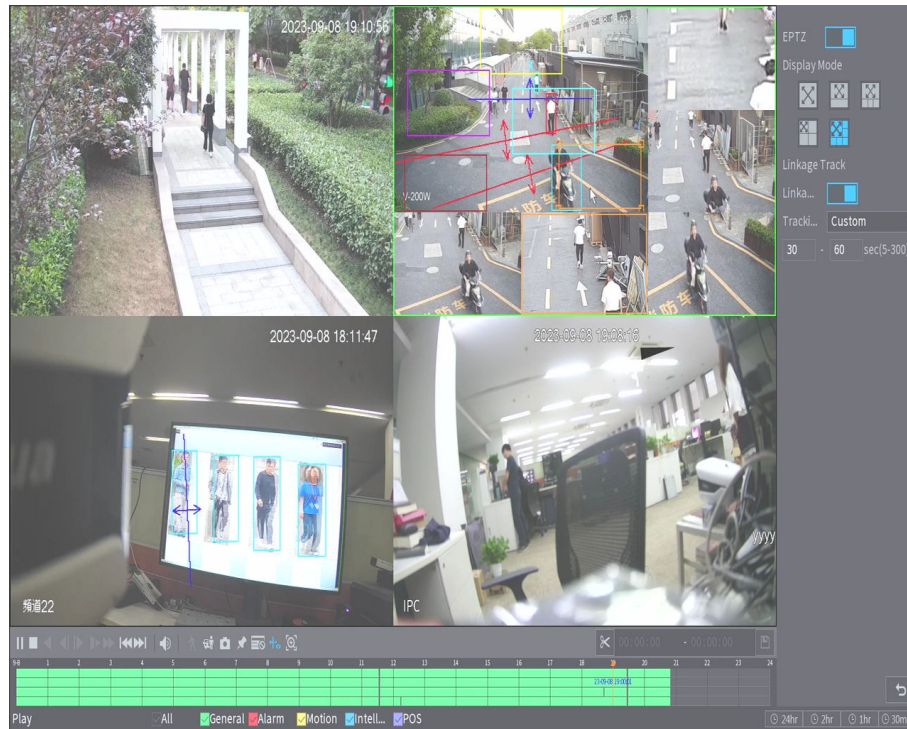
1.3.4.2 EPTZ Linkage in Playback

1. In the 1-split or 4-split playback mode, select the channel and click the EPTZ icon. The EPTZ configuration page is displayed.
2. Enable EPTZ to configure the display mode, linkage tracking and more. The display and tracking effect will be displayed on the playback image of the corresponding channel.

Figure 1-19 EPTZ linkage in playback (1)



Figure 1-20 EPTZ linkage in playback (2)



In the 4-split playback mode, you can enable EPTZ for the highlighted channel. You can only enable EPTZ for one channel at a time.

EPTZ cannot be enabled or disabled in more splits.

When you enable EPTZ during playback for a channel, after you end the playback, the effect remains effective. When you play the recorded video for this channel, EPTZ effect is still displayed.

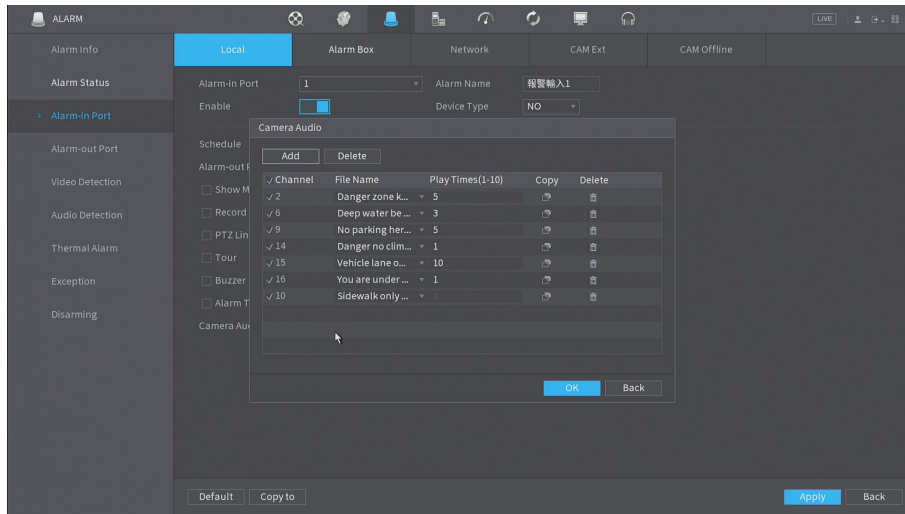
1.3.5 Multi-channel TiOC Alarm Linkage

You can configure sound and light alarm linkage of multiple channels for local alarm and AI event linkage items.

1.3.5.1 Configuring Camera Audio

Click the settings button next to Camera Audio, the camera audio settings page is displayed.

Figure 1-21 Camera audio



Click Add, and the connected channels that support camera audio configuration are displayed. Select the channels to be added, and click OK to add the channel.

On the list of added channels, configure the name of the linked audio file and the play times. You can copy the configuration of a channel to other channels.

You can delete one or more added channels in batches.

Select multiple added channels, and click OK to apply the configuration. When an event is triggered, the corresponding camera audio of multiple channels is linked.

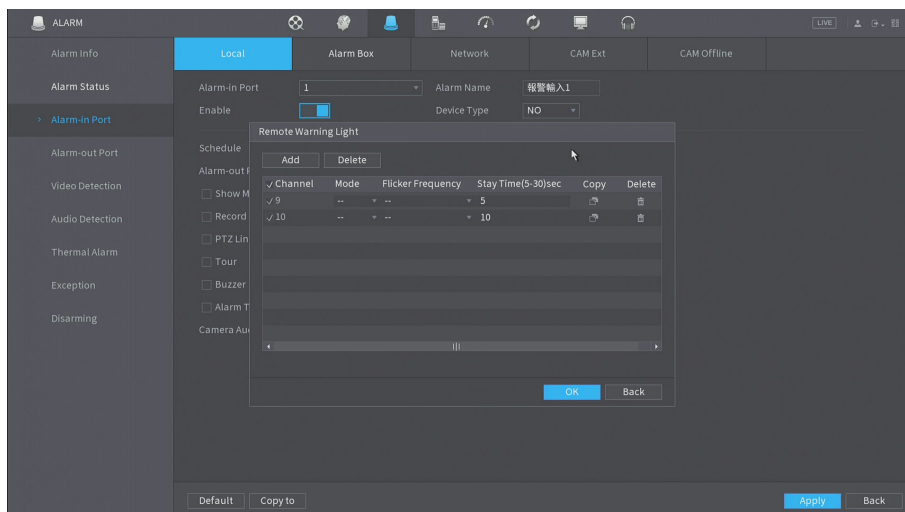


If the channel of the alarm event supports camera audio configuration, the audio configuration of the channel is displayed by default and cannot be deleted. This configuration is synchronized to the front-end device.

1.3.5.2 Configuring Remote Warning Light

The configuration is the same as that of camera audio.

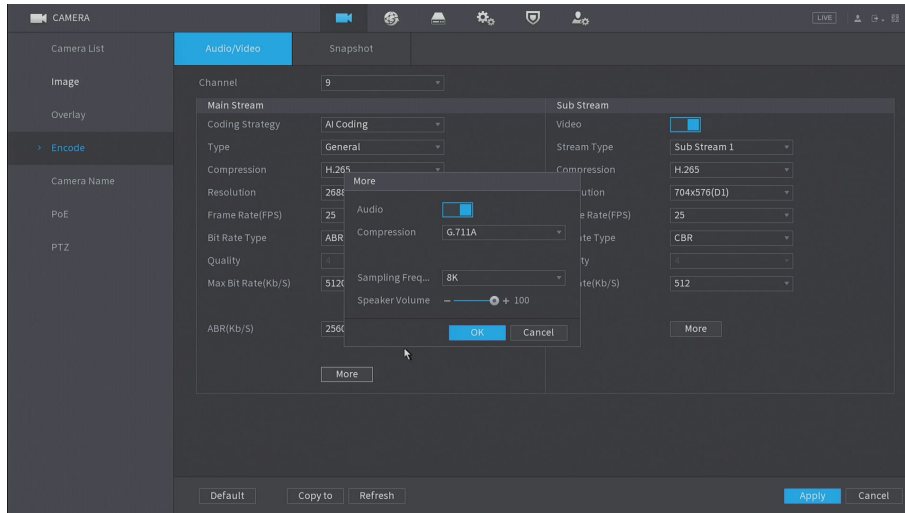
Figure 1-22 Remote warning light



1.3.6 Adjusting IPC Volume

Select **Encode > Audio/Video > More** to configure the camera volume.

Figure 1-23 Configure volume



The configuration is displayed only for cameras that support audio output.

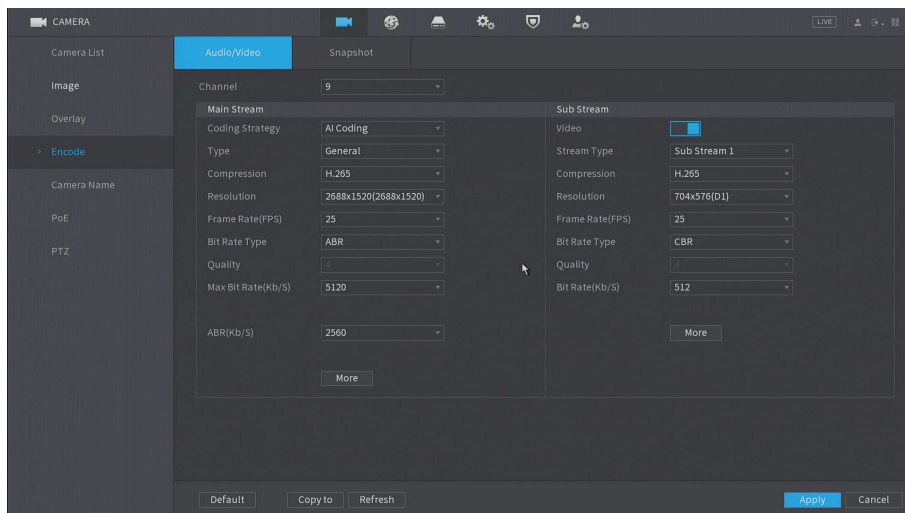
1.3.7 Displaying ABR



Prerequisite: The connected camera supports ABR.

Select **CAMERA > Encode > Audio/Video**, and check whether ABR is displayed in **Main Stream** settings.

Figure 1-24 ABR



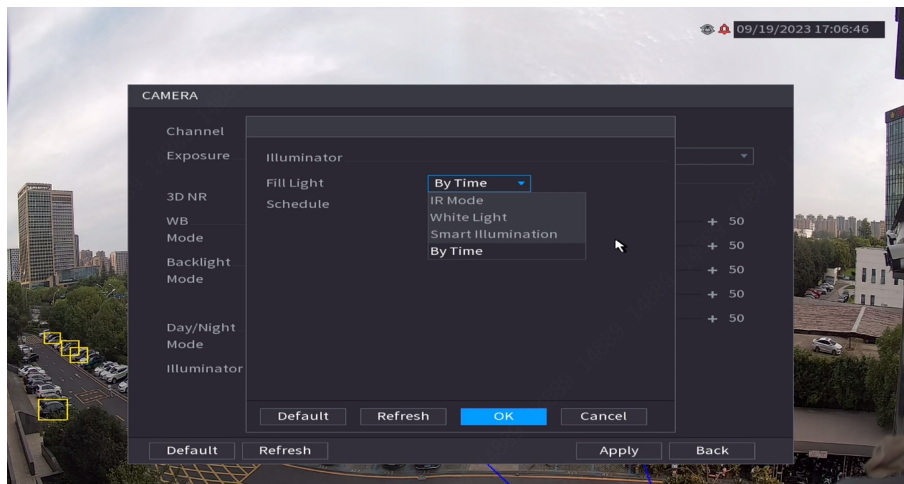
1.3.8 Configuring Illuminator Plan



Switch the illuminator plan by time for the connected cameras.

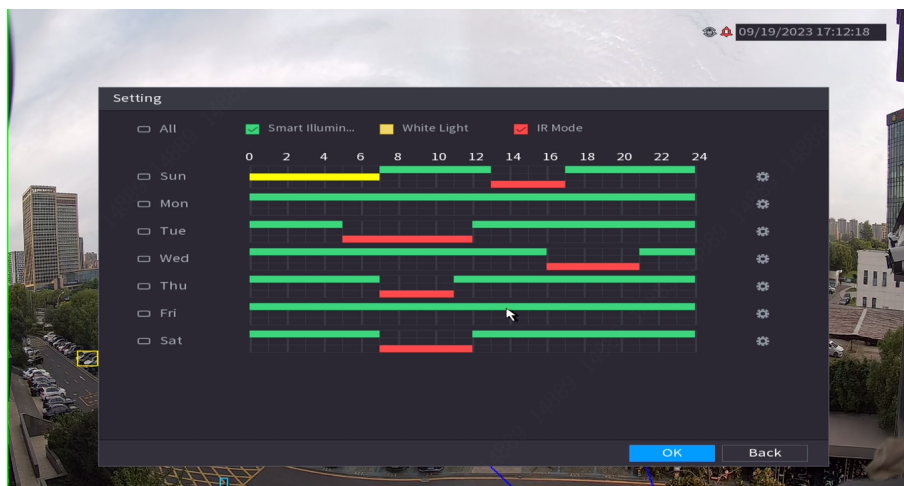
Select **Image > Illuminator**, and then select **By Time**.

Figure 1-25 Illuminator plan by time



Configure the schedule.

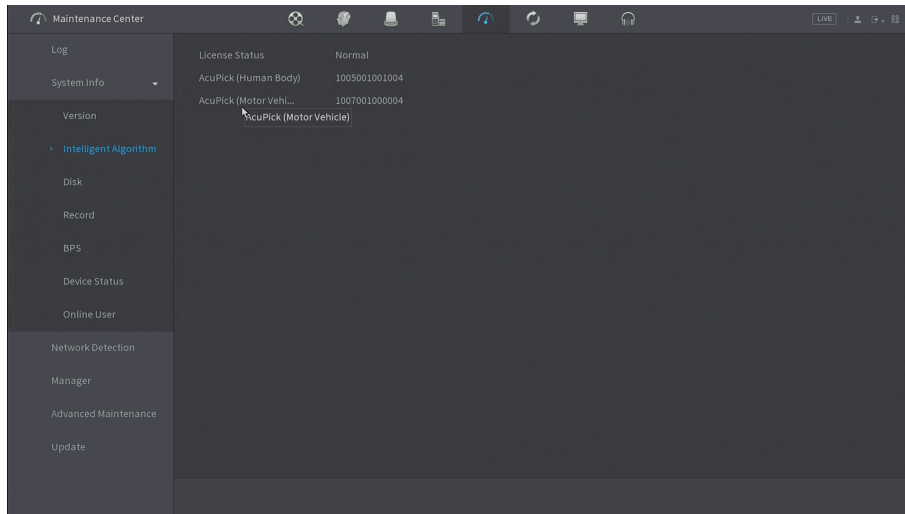
Figure 1-26 Schedule



1.3.9 Displaying AcuPick Algorithm Version

Select **Maintenance Center > System Info > Intelligent Algorithm** to view the version information of the AcuPick algorithm.

Figure 1-27 AcuPick algorithm version

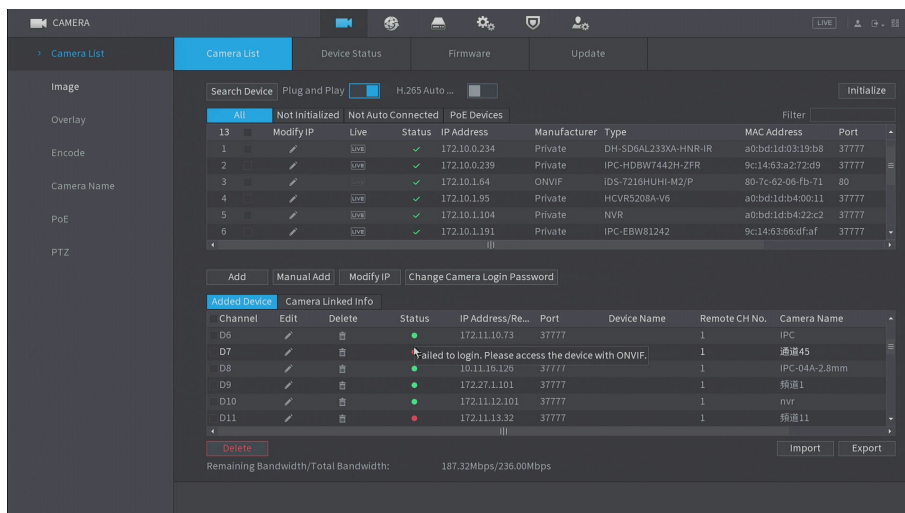


1.3.10 Connecting Imou Cameras through ONVIF

Imou cameras cannot be connected to the device through private protocols.

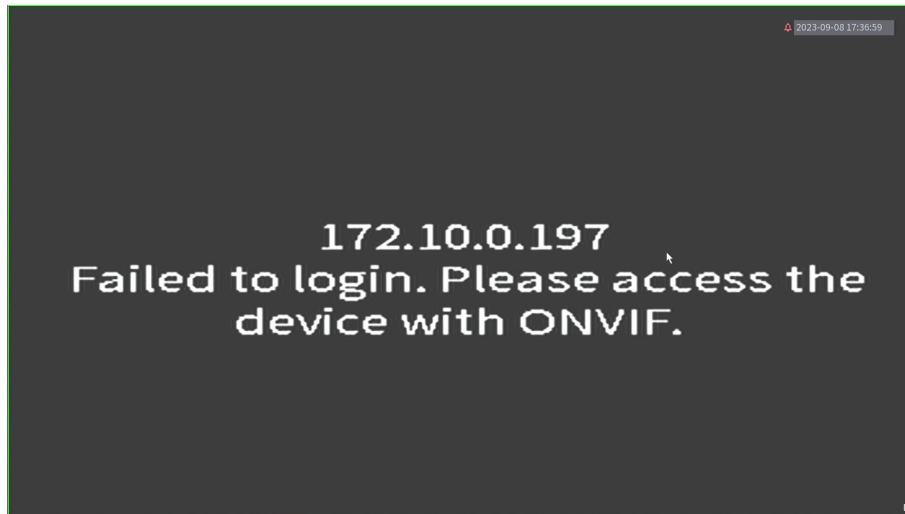
In Camera List > Added Device, Imou cameras added through private protocols cannot be connected. The system prompts “Failed to login. Please access the device with ONVIF” for the connection status.

Figure 1-28 Prompt for connection status



On the Live page, for Imou cameras added through private protocols, “Failed to login. Please access the device with ONVIF” is overlaid on the live video.

Figure 1-29 Channel overlay



1.4 Fixed Bugs

None.

1.5 Compatibility

1.5.1 Program

After the earlier baseline V4.000.0000000.0.R.230131 is updated to this new baseline version or later, it cannot be degraded to the original version.

1.5.2 Browser

IE 11 and later, Safari 10 and later, Edge, Firefox V70 and later, and Chrome 41 and later.

1.5.3 Third-party Access

1. ONVIF testing tool version: V22.12.
2. ONVIF: Supports Profile T, Profile S and Profile G.

1.6 Software Environment

Category	Model	Version
IPC	DH-IPC-HFW1230S P-A-0280B-S5	DH_IPC-HX2(1)XXX-Euler_EngSpnRus_PN_V2.840.0000000.5.R.221222.zip

Category	Model	Version
IPC	DH-IPC-HFW1230S P-0360B-S5	DH_IPC-HX2(1)XXX-Euler_EngSpnRus_PN_V2.800.0000000.18.R. 220902.zip
IPC	DH-IPC-HFW1431S N-0280B-S4	DH_IPC-HX1XXX-Molec_MultiLang_NP_V2.820.0000000.49.R.220815.zip
IPC	DH-IPC-HFW1430S P-A-0280B-S5	DH_IPC-HX14XX-Hertz2_EngSpnRus_PN_V2.800.0000000.12.R. 221214.zip
IPC	DH-IPC-HDW1530T P-0280B-S6	DH_IPC-HX1XXX-Hertz_EngSpnRus_PN_V2.800.0000000.18.R.220902.zip
IPC	DH-IPC-HDW1830T P-0280B-S6	DH_IPC-HX18XX-Molec_EngSpnRus_PN_V2.800.0000000.18.R. 220902.zip
IPC	DH-IPC-HDW2441T P-S-0280B	DH_IPC-HX2X4X-Taylor_MultiLang_PN_V2.840.0000000.8.R.221213.zip
IPC	DH-IPC-HDW2449T P-S-IL-0280B	DH_IPC-HX2X4X-Taylor_MultiLang_PN_V2.840.0000000.8.R.221213.zip
IPC	DH-IPC-HDW2531T P-AS-0280B-S2	DH_IPC-HX25(8)XX-Molec_MultiLang_PN_V2.820.0000000.49.R. 220815.zip
IPC	DH-IPC-HDW2849T P-S-IL-0280B	DH_IPC-HX2XXX-Kant_MultiLang_PN_V2.860.0000000.4.R.230109.zip
IPC	DH-IPC-HDW2831T P-AS-0280B-S2	DH_IPC-HX25(8)XX-Molec_MultiLang_PN_V2.820.0000000.49.R. 220815.zip
IPC	DH-IPC-HFW3241T P-ZS-27135-S2	DH_IPC-HX3XXX-Taurus_MultiLang_PN_Stream3_V3.120.0000000.9.R. 221118.zip

Category	Model	Version
IPC	DH-IPC-HDW3441T P-ZS-27135-S2	DH_IPC-HX3XXX-Taurus_MultiLang_PN_Stream3_V3.120.0000000.9.R.221118.zip
IPC	DH-IPC-HDW3449H P-AS-PV-0280B-S4	DH_IPC-HX3XXX-Taurus_MultiLang_PN_Stream3_V3.000.0000000.22.R.221119.zip
IPC	DH-IPC-HDW3549H P-AS-PV-0280B-S4	DH_IPC-HX3XXX-Taurus_MultiLang_PN_Stream3_V3.000.0000000.22.R.221119.zip
IPC	DH-IPC-HDW3849H P-AS-PV-0280B-S4	DH_IPC-HX3XXX-Taurus_MultiLang_PN_Stream3_V3.000.0000000.22.R.221119.zip
IPC	DH-IPC-HDBW3241 FP-AS-0210B-S2	DH_IPC-HX3XXX-Taurus_MultiLang_PN_Stream3_V3.120.0000000.9.R.221118.zip
IPC	DH-IPC-HDBW3441 FP-AS-0210B-S2	DH_IPC-HX3XXX-Taurus_MultiLang_PN_Stream3_V3.120.0000000.9.R.221118.zip
IPC	DH-IPC-HDW5241T MP-ASE-0280B-S3(AcuPick)	DH_IPC-HX5XXX-single-Riemann_MultiLang_PN_Stream4_V3.100.0000000.5.R.230509.zip
IPC	DH-IPC-HDW5442T MP-ASE-0280B-S3(AcuPick)	DH_IPC-HX5XXX-single-Riemann_MultiLang_PN_Stream4_V3.100.0000000.5.R.230509.zipp

Category	Model	Version
IPC	DH-IPC-HFW5541T P-ASE-0280B-S3(AcuPick)	DH_IPC-HX5XXX-single-Riemann_MultiLang_PN_Stream4_V3.100.0000000.5.R.230509.zip
IPC	DH-IPC-HFW5842E P-ZE-2712-S3(AcuPick)	DH_IPC-HX5XXX-single-Riemann_MultiLang_PN_Stream4_V3.100.0000000.5.R.230509.zip
IPC	DH-IPC-HFW7442H P-Z-0832-DC12AC24 V-X	DH_IPC-HX7XXX-HW-Faraday_MultiLang_PN_V3.100.0000000.12.R.230111.zip
IPC	DH-IPC-HFW7842H P-Z-2712F-DC12AC24 V-X	DH_IPC-HX7XXX-HW-Faraday_MultiLang_PN_V3.100.0000000.12.R.230111.zip
IPC	DH-IPC-HFW71242 HP-Z-2712-DC12AC24 V-X	DH_IPC-HX7XXX-HW-Faraday_MultiLang_PN_V3.100.0000000.12.R.230111.zip
IPC	DH-IPC-MFW7849Y P-Z-2080-T44-0832	DH_IPC-MFW8XXX-Faraday_MultiLang_NP_Stream3_V3.100.0000000.5.R.221102.zip
IPC	DH-IPC-HDW8441X P-3D-0200B	DH_IPC-HX7(8)XXX-EMMC-Taurus_MultiLang_PN_Stream3_V3.000.0000000.14.R.220718.zip
IPC	DH-IPC-EB5541	DH_IPC-EX5XXX-Leo_MultiLang_NP_Stream3_V2.800.0000000.40.R.220815.zip
IPC	DH-IPC-EBW81242 P-AS-S2	DH_IPC-HX8(7)XXX-FE-Darwin_MultiLang_PN_V3.000.0000000.1.R.210705.zip
IPC	DH-IPC-PFW81642 P-A180-DC12AC24 V	DH_IPC-PFW8XXX-Four-Faraday_MultiLang_PN_Stream3_V3.100.0000000.4.R.220813.zip

Category	Model	Version
IPC	DH-PSDW8244 2M-A270-D440-S3	DH_IPC-PSDW8XXX-Plato-Darwin_MultiLang_PN_Stream3_V3.000.0000000.7.R.221217.zip
IPC	DH-IPC-PDBW8204 1P-B360-E4-2812-ATC-S2	DH_IPC-PDBW820XX-Faraday_MultiLang_PN_Stream3_V3.100.0000000.6.R.220908.zip
IPC	DH-IPC-MFW7442K 1P-Z-0832-T40-0360B	DH_IPC-HX5XXX-EMMC2-Volt_MultiLang_PN_Stream3_V2.840.0000000.18.R.220629.zip
IPC	DH-IPC-HFW7442H N-Z-2712F-DC12AC24 V	DH_IPC-HX8XXX-Nobel_MultiLang_NP_V3.000.0000000.2.R.210712.zip
IPC	DH-IPC-HFW7442H P-Z-2712F-DC12AC24 V-S2	DH_IPC-HX7XXX-Darwin_MultiLang_PN_V3.000.0000000.4.R.220720.zip
IPC	DH-IPC-HFW5241E P-ZE-27135	DH_IPC-HX5XXX-Volt_MultiLang_PN_Stream3_V2.840.0000000.18.R.220629.zip
IPC	DH-IPC-PFW5849P-A180-E2-ASTE-0360 B	DH_IPC-HX5(4)XXX-Taurus_MultiLang_PN_Stream3_V3.120.0000000.2.R.221021.zip
ITC	DHI-ITC415-PW6M-IZ	General_ITC(X15)(X37)-PW6M-XXX-C2_Eng_PN_Oversea_V2.626.0000000.4.R.220718.zip ShengChanTEST_ITC(X15)(X37)-PW6M-XXX-C2_Eng_PN_Oversea_AUTOTEST_V2.625.0000000.0.R.211118.zip
ITC	DHI-ITC431-RW1F-IRL8	General_ITC431-RW1F-IRL8(L)-C2_Eng_PN_Oversea_V4.003.0000000.0.R.220907.zip ShengChanTEST_ITC431-RW1F-IRL8(L)-C2_Eng_N_Oversea_V4.001.0000000.0.R.210907.zip

Category	Model	Version
ITC	DHI-ITC952-AU3F-IRL8ZF1640	General_ITCX52-AF3F(RF2F)-(IR7)(IR8)-C1_Eng_PN_Oversea_V4.003.0000000.0.R.220526.zip ShengChanTEST_ITCX52-AF3F(RF2F)-(IR7)(IR8)-C1_Eng_PN_Oversea_V4.001.0000000.9.R.211126.zip
TPC	DHI-TPC-PT8441D-BM100Z56L-BM-DC48-S23	General_TPC-NYX5400-BMXB_V1.000.0000000.0.R.220121.zip General_TPC-PTZ83-HNL-V_MCU_V2.401.0000000.2.R.220727.zip General_TPC-PT8XX1D-F-CODE_MCU_V2.401.0000000.1.R.220726.zip General_TPC-SD-Gram_PART_V2.830.0000000.0.R.220909.zip DH_TPC-PT8XX1D-B-S2_MultiLang_PN_V2.650.0000000.3.R.221013.zip
TPC	DHI-TPC-SD2241-TB7F8-DW-S2	General_TPC-NYX2200-MS-CTPGW_V1.000.0000000.4.R.20220812.zip DH_TPC-SD2X41-B-S2_MultiLang_PN_V2.650.0000000.6.R.220908.zip General_TPC-SD49XXX-HN_MCU_V2.401.0000000.1.R.191031.zip
TPC	DHI-TPC-BF1241-TB7F8-DW-S2	DH_TPC-DF1241-TB-S2_MultiLang_PN_V2.650.0000000.8.R.221117.zip General_TPC-NYX2200-MS-CTPGW_V1.000.0000000.4.R.20220922.zip
SD	DH-SD5A225GB-HNR	General_SD5AXXXG-HN_MCU_V2.401.0000001.42.R.220811.zip DH_SD-Taurus_MultiLang_PN_Stream3-Normal_V2.820.0000013.1.R.220923.zip
SD	SD3A200-GNP-W-PV	General_SD-Leo_MultiLang_PN_Stream3_V2.811.0000009.0.R.220629.zip
VTO	DHI-VTO2202F-P-S2	DH_VTOXXXXD-G-S2_MultiLang_PN_PAAS_SIP_EMEA_V4.600.0000000.0.R.220813.zip
VTO	DHI-VTO6221E-P	DH_VTOX221E_MultiLang_PN_PAAS_SIP_EMEA_V4.600.0000000.0.R.220805.zip General_VTO3-6-MCU_V1.000.0000000.1.R.20181107.zip
Platform	DSS Pro	General_DSS-Client_Win64_IS_V8.002.0000000.0.R.20221210
Platform	SmartPSS Lite	2.7.05.01.01657-General_SmartPSSLite_Eng_Win64-Install_IS_V1.003.0000002.0.R.221230
App	DMSS	1.99.202
COS Pro	COS Pro	1.016.0000002
PlaySDK	PlaySDK	General_PlaySDK_Eng_Win64_IS_V3.045.100E000.0.R.230218.zip
Tool	ConfigTool	General_ConfigTool_ChnEng_V5.001.0000001.0.R.20220728

Category	Model	Version
Tool	NetSDK	General_NetSDK_Eng_Linux64_IS_V3.055.0000001.0.R.211101.tar.gz
Tool	Dahua Player (including DiskManager)	General_NetSDK_Eng_Win64_IS_V3.055.0000001.0.R.211101.7z
Tool	NKB1000	General_NKB1000_Eng_V2.620.0000000.0.R.20180115.zip

1.7 Pending Issues

None.

1.8 Update Guide

Refer to the following instructions when updating the product.

1. You can update the device through ConfigTool, webpage and USB flash drive. For details, see the update guide.
2. During the update, the device will stop some services, such as recording and live view. After the update is complete, restart the device to resume normal operation.
3. Do not disconnect the power supply during the update. Otherwise the device might not be able to start normally.

ENABLING A SAFER SOCIETY AND SMARTER LIVING