



2*4MP Dual-Directional No-Splicing Network Camera



2021.08.20

Key Features—2×4 MP Dual-Directional No-Splicing WizMind Network Camera



Product Comparison---HDBW5441F-AS-E2 VS HDBW4231F-E2



| Product Models | IPC-HDBW5441F-AS-E2 | IPC-HDBW4231F-E2 | EoL |
|-------------------|------------------------------|-----------------------------|-----|
| Resolution | 2*4MP(2560×1440)@25/30fps | 2*2MP(1920× 1080)@25/30fps | |
| WDR | 2-ch 120dBWDR | 1-ch 120dBWDR | |
| IVS | Supported(AI algorithm) | Supported(Non-AI algorithm) | |
| SMD 3.0 | Supported | -- | |
| People Counting | Supported | -- | |
| Queue Management | Supported | -- | |
| Two-In-One Stream | Supported | -- | |
| IR Distance | 30m | 20m | |
| Audio Port | Built-in MIC +1 Audio in/out | Built-in Mic | |
| Alarm Port | 2Alarm in、 2Alarm out | -- | |
| Protection | IP67& IK10 | IP67& IK10 | |

One Machine, Dual Use



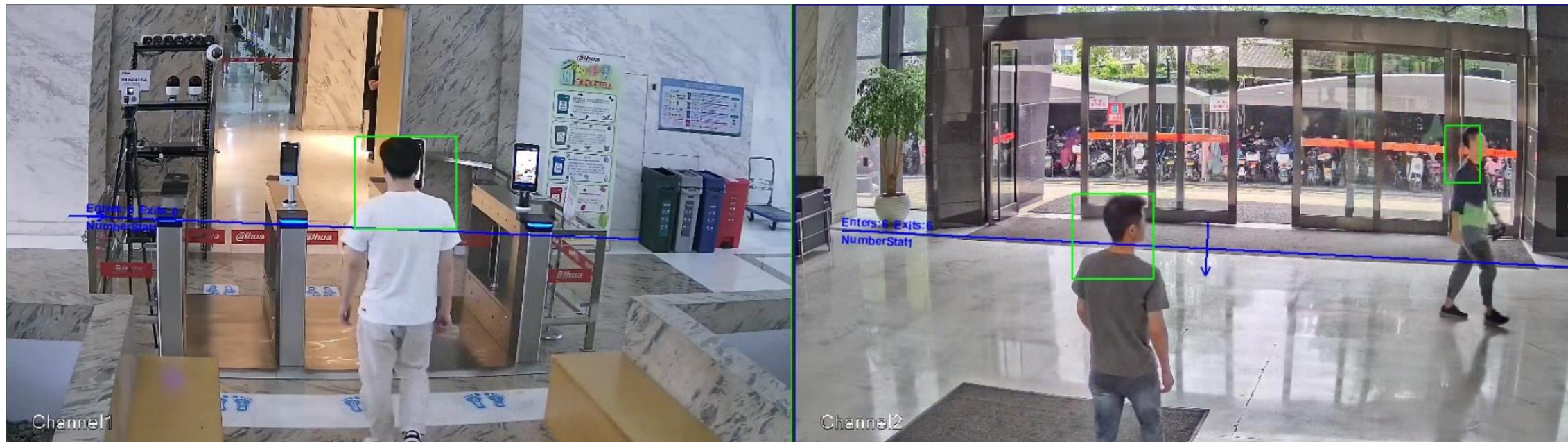
- All-In-One design, One IP, Dual-channel, Dual use.
- The lens can be flexibly adjusted horizontally and vertically, suitable for 90° corner monitoring and 180° long corridor monitoring
- Provides the same detailed coverage as dual single-sensor cameras but with less installation



- Value Proposition: more coverage with Less Infrastructure
- Saves on cost of installation and operation for lower total cost of ownership

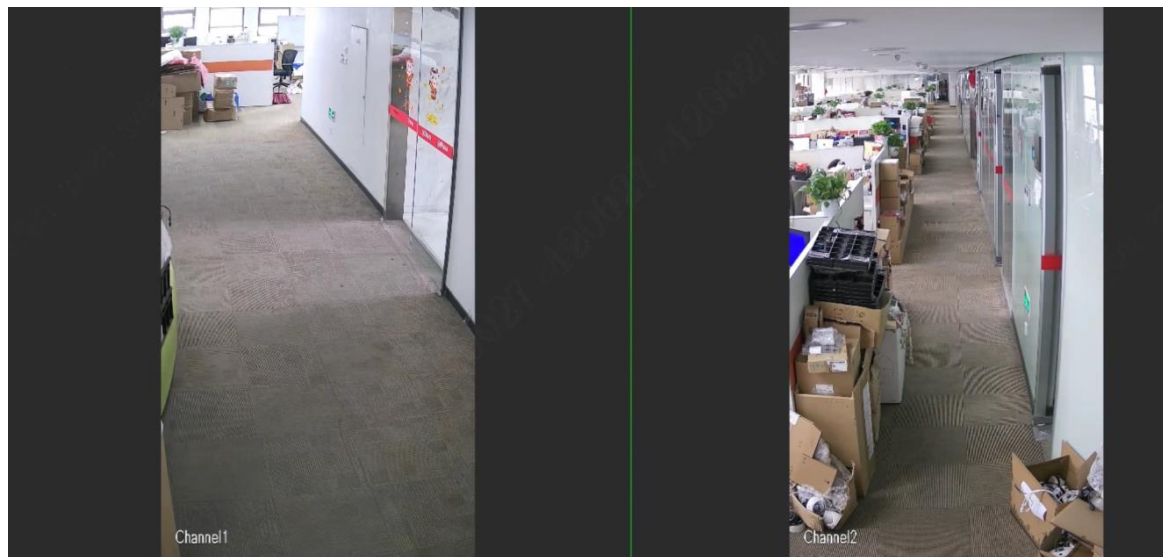


Dual-channel Intelligence



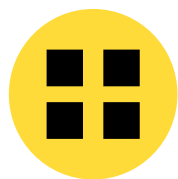
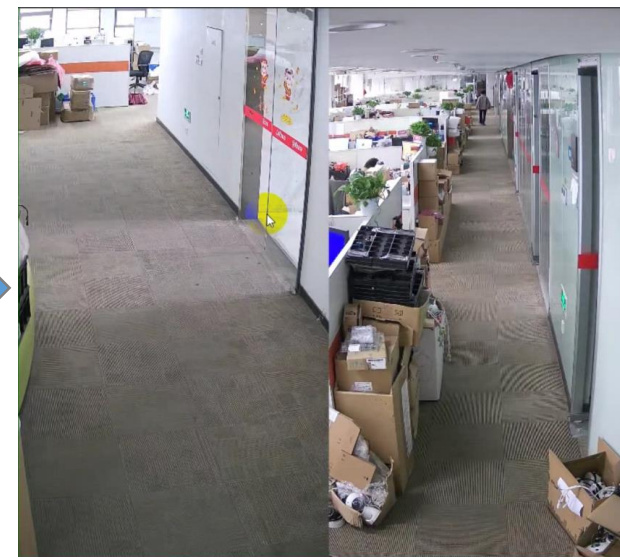
- Dual-channels support SMD 3.0, perimeter prevention, Area People Counting and Line-crossing People Counting.
- Dual-channels are independent and can enable different smart functions.

Two-In-One Stream



Two-In-One Stream

**A new way to
save license cost**



How to solve the problem that some third-party platforms charge the license fees based on the channel number of camera?



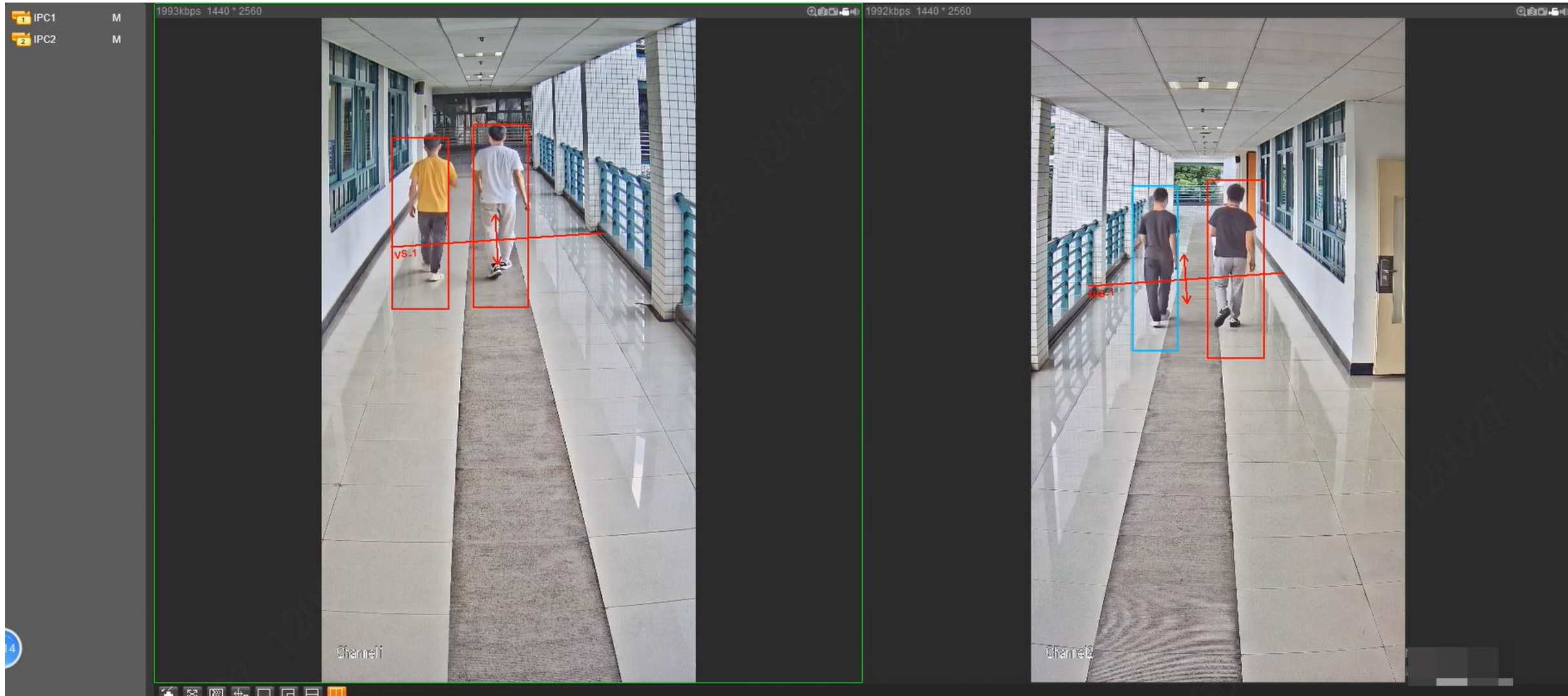
A: Two-In-One Stream technology supports dual-channels streams viewed in the first channel simultaneously. That is, the multiple images can be displayed in one channel.

Typical Scenarios---Interior corridor



- Realize the monitoring of super long walkways through wall or ceiling installation

Typical Scenarios---Classroom outdoor corridor



- Realize two-way monitoring of outdoor corridors by turning on corridor mode

Typical Scenarios---Indoor corner



Channel 2 camera



Channel 1 camera

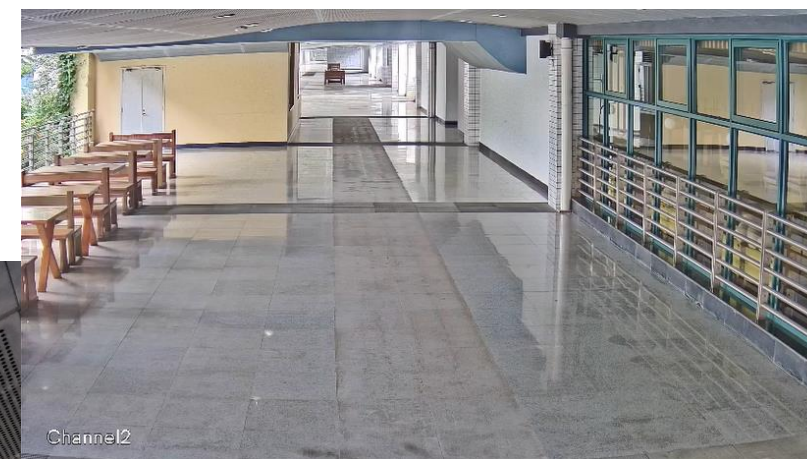
Channel 1 Camera: Automatically turn on infrared in a low-light environment, completely covering the entrance.

Channel 2 Camera: Realize the monitoring of long corridors by turning on the corridor mode.

Typical Scenarios---Corner of the teaching building



Channel 2 camera

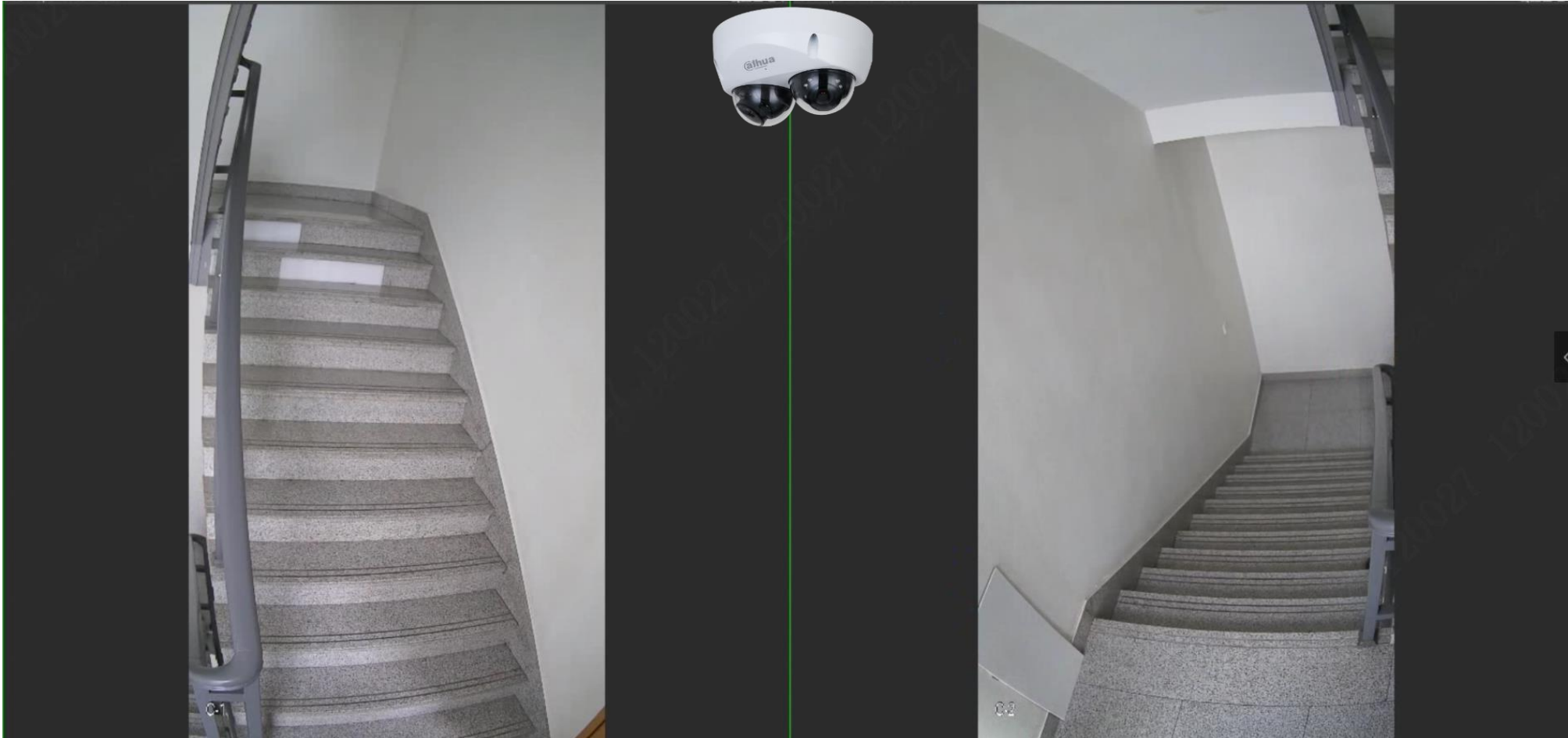


Channel 1 camera



- One camera provides dual-channel monitoring at 90° corners .

Typical Scenarios---**stairwell**



- One camera provides a full overview of a stairwell.

Typical Scenarios---Hotel corridor



- One camera provides video from both directions

Models Lists

| Material Code | Product Model | Replaced Material Code | Replaced Product Model |
|-----------------|-------------------------------|------------------------|------------------------------|
| 1.0.01.04.36303 | DH-IPC-HDBW5441FP-AS-E2-0280B | 1.0.01.04.26250 | DH-IPC-HDBW4231FP-E2-M-0280B |
| 1.0.01.04.36305 | IPC-HDBW5441FP-AS-E2-0280B | 1.0.01.04.26255 | IPC-HDBW4231FP-E2-M-0280B |
| 1.0.01.04.36304 | DH-IPC-HDBW5441FP-AS-E2-0360B | 1.0.01.04.26179 | DH-IPC-HDBW4231FP-E2-M-0360B |
| 1.0.01.04.36306 | IPC-HDBW5441FP-AS-E2-0360B | 1.0.01.04.26186 | IPC-HDBW4231FP-E2-M-0360B |