

# DSS Professional

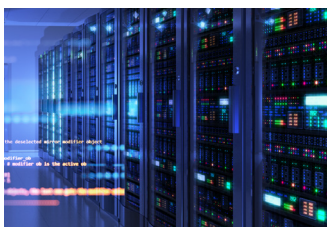
Highly Available Security System for Enterprises

### ■ Introduction

Dahua Security System (DSS) Professional is designed for centralized security management. It enhances hardware performance and provides centralized video monitoring, access control, video intercom, alarm controller, POS, radar and AI features, such as face recognition, automatic number plate recognition, and video metadata.

Whether you are a small business with a few cameras, or a global business spread across the globe with over 20,000 cameras, DSS Professional is the right solution for you. Even if your needs change in the future, you can easily scale, upgrade or add functionalities to DSS Professional so that your needs are met. Build your security management system on a solid foundation with DSS Professional.

### ■ Features



#### ***Scalable Design, Easy to Grow***

With distributed deployment, you can easily expand the supported channels to 20,000 and central storage capacity to 4 PB. The multi-site function allows you to incorporate multiple DSS platforms into one, and conveniently show their information on one PC client. You can access live and recorded videos, real-time and historical events, and more.



#### ***AI-Powered Applications, Proactive Security***

DSS Professional integrates various AI capabilities that devices have, such as face recognition, automatic number plate recognition, and video metadata. You will be notified immediately when the target you are interested in appears, allowing you or security personnel to take necessary security measures.



#### ***Highly Available Technology, More Stable***

With hot standby and N+M redundancy, DSS Professional ensures that your business will not be interrupted by failed servers.



#### ***Customized Services, Enhanced Competitiveness***

We offer services for you to build DSS Professional into your own platform, allowing it to fully suit your needs and give you a competitive edge in the market.

## ■ Main Functions

### ***Monitoring Center***

---

#### ◆ ***Live View***

With its easy to use live view, you can both customize and control how you view videos in real time. The layout can also be configured to display videos in different sizes, enabling you to give priority to important areas by placing them in larger windows. You can also remotely control certain devices to perform various actions such as talking to people through the camera, and unlocking the barrier of a turnstile to grant access to people. If an emergency occurs, manual recording is just a click away, so that you can quickly save that particular part of the video for evidence.

#### ◆ ***Playback***

The playback function allows you to play recorded videos stored on the server and devices in multiple windows. To help you efficiently wade through tons of videos, you can play them 64X faster than the normal speed, skipping parts that you are not interested in, or you can slow them down to 1/64X, to focus on important sections. To control the data in the videos, you can add tags to mark relevant content, and you can even lock them to prevent them from being overwritten when the disk space is full. The filter function can also be very helpful when you only need to deal with a specific type of video, or a type of target that appeared in one or more areas.

#### ◆ ***Video Wall***

Video wall is used to display videos on a large screen that consists of many smaller screens. Highly customizable, you can not only configure the layout of the video wall, but you can also display recorded videos and real-time videos to zero in on important details in the video. With the task function, you can schedule videos from different channels to be displayed on the video wall at specified times or in a loop.

#### ◆ ***Map***

The map is a very useful function that allows you to keep track of devices and events through their location information. With it, you can mark a device and immediately know the location of an event when the device triggers an alarm and flashes red on the map. You can also add submaps to different areas. For example, a plan view of a public square can be added to a map to reveal the exact location of people who are inside the public square.

#### ◆ ***Group Talk***

The real-time location of MPT devices are shown on the map, making it easy for dispatchers to effectively send officers and resources to address issues such as a burglar or duress alarm going off in a building. Dispatchers can start a group talk and engage in a real-time conversation with the officers who were assigned the task to efficiently guide them through the process.

### ***DeepXplore***

---

Powered by AI technology, you can easily search for targets, look for records on them and even generate tracks on their movement to observe their whereabouts through setting simple search conditions. To gain an overview on the target, you can organize information on them into a case and generate a report.

### **Event Management**

---

You can monitor and process over 200 types of alarms right from the event center, while it continuously generates statistics. To give you a clear picture of what is happening in your area, the alarm center also displays a variety of useful information such as the number of alarms that were processed, and the type of alarms that are triggered most frequently. Highly flexible, you also have a selection of predefined alarm types available to you, and the option to not only create your own alarm, but to also manually trigger it to take snapshots and send emails for important events.

### **Maintenance Center**

---

On a single page, you can get to know the full status of channels, devices and servers, and information on faults to instantly recognize which channels are offline, whether the server has stopped working, and much more. Scheduled reports are also sent based on the information collected to give you a full picture of how your system is running. Updating is also a breeze, as you can easily update multiple devices on DSS Professional in batches when new versions are available.

### **Access Management**

---

#### ◆ **Access Control**

Through the integrated access control system, you can control access within any area directly from DSS Professional by utilizing the access control devices on the platform. You can use it to lock doors remotely, monitor the area around doors, set advanced authentication rules to protect classified areas, and more. To keep you up to date, the system also keeps complete records of all access control activities.

#### ◆ **Video Intercom**

All video intercom devices can be managed directly through one easy-to-use interface that offers two-way communication and remote access control. Through the interface, you can secure access to your premises, and receive calls and emergency reports directly from people on-site. Building management is also very convenient, as you can send group notices to all the indoor monitors, keeping people informed of important events, such as scheduled power outages.

#### ◆ **Lift Control**

To create a safe building, access to elevators and floors must be controlled. With DSS Professional, you can exercise this control, restricting movement to a select few persons for any floor of your choice. After access is granted, people can verify their identities at the door station or the lift control panel, and then the lift will go directly to the floor they are on. The platform also maintains records of all authentications for you to review at your convenience.

#### ◆ **Attendance**

DSS Professional is your one-stop solution to keep track of the working hours of your employees and to manage absence and leave. Detailed reports can be generated for appraisal of employees and calculation of wages.

#### ◆ **Visitor**

DSS Professional offers a complete process to manage visitors, including appointment, registration, access permission authorization, and ending visit with all permissions canceled. A complete, detailed record of all visits is available for your review at any time.

## Intelligent Analysis

To help build your profits and strengthen your services, the platform provides invaluable information on people on your premises through performing a variety of intelligent analysis and generating heat maps. Through it, you can know the number of people in an area at any given time, where they frequent the most, and precisely when the highest peaks in numbers occurs.

## Parking Lot Management

From one platform, you can remotely control all your parking space detectors, ANPR devices and parking space available displays to manage vehicles within your parking lots. These devices can all be coordinated to guide vehicles to parking spaces in an orderly fashion. With its visualization function, you can also directly manage devices through the visual map of your parking lot by simply dragging and dropping devices onto it.

## Synthesis

DSS Professional is friendly with other systems in your infrastructure. By developing bridges, linkage actions can be flexibly configured on DSS Professional based on the events that are triggered on other platforms. What's more, DSS professional can synchronize attendance data and access control records with the databases from other platforms.

## System Requirements

	Server		PC	
	Recommended	Minimum	Recommended	Minimum
<b>CPU</b>	Intel Xeon Silver 4114@ 2.2 GHz 10 Core Processor	Intel Xeon E-2224 3.4 GHz, 8 MB cache	Intel Core i7, 64 bits 4 Core Processor	Intel Core i3, 64 bits 4 Core Processor
<b>Memory</b>	16 GB	8 GB	16 GB	4 GB
<b>System Disk</b>	7200 RPM Enterprise Class HDD 1 TB, 500 GB free space for DSS	7200 RPM Enterprise Class HDD 1 TB, 500 GB free space for DSS	-	
<b>Storage Disk</b>	7200 RPM Enterprise Class HDD 1 TB, 500 GB free space for DSS		200 GB free space for DSS Client	100 GB free space for DSS Client
<b>Graphics Card</b>	-		NVIDIA® GeForce®GT 730	Intel® HD Graphics 4400
<b>Ethernet Port</b>	4 Ports@1000 Mbps	2 Ports@1000 Mbps	1000 Mbps	
<b>Operating System</b>	Microsoft® Windows server 2012(64-bit) Microsoft® Windows server 2016(64-bit) Microsoft® Windows server 2019(64-bit) Microsoft® Windows 10 20H2(64-bit)		Microsoft® Windows 7 (32-bit) Microsoft® Windows 7 (64-bit) Microsoft® Windows 10 20H2(32-bit) Microsoft® Windows 10 20H2(64-bit) Microsoft® Windows 11(64-bit) Microsoft® Windows server 2008(64-bit) Microsoft® Windows server 2012(64-bit) Microsoft® Windows server 2016(64-bit) Microsoft® Windows server 2019(64-bit)	
<b>Languages</b>	English (United States), Simplified Chinese.		Arabic, Bulgarian, Czech, Danish, English (United States), Finnish, French, German, Hebrew, Hungarian, Italian, Japanese, Korean, Macedonian, Polish, Portuguese, Russian, Simplified Chinese, Spanish, Thai, Traditional Chinese, Turkish, Ukrainian, Vietnamese.	

## ■ Performance Specification

The following specifications are obtained in a server with recommended system requirements.

Organization, Role and User	
Organizations	10 levels; 999 organizations in total
Roles (User Permission)	500
Users	200 online users and 2,500 total users
Roles per User	32
Users for VDP Mobile App	500 online users and 5,000 total users

Recording Plan	
General Recording Plans	3,000
Motion Detection Recording Plans	3,000
Video Retrieval Plans	3,000
File Retrieval Plans	3,000

Event	
Event Rules	3,000

Map	
Hierarchies	8
Size of Offline GIS Map Package	500 MB
Number of Raster Maps	256
Number of Submaps per Map	32
Maximum Size of Raster Map	15 MB
Raster Map Resoluton	8,100 × 8,100
Number of Resources on GIS Map	300
Number of Resources per Raster Map	300

Person and Vehicle Management	
Persons	300,000
Cards	600,000
Faces	300,000
Fingerprints	600,000
Vehicles	50,000

## Face and Vehicle Watch Lists<sup>①</sup>

Face Watch Lists	50
Vehicle Watch Lists	32
Total Faces	300,000
Faces per Face Watch List	50,000
Vehicles per Vehicle Watch List	50,000

## Intelligent Analysis

People Counting Groups	30
People Counting Rules per Group	20

## Parking Lot Management

Vehicle Groups	32
Number of Entrances and Exits	60
Parking Lots	16
Entrance and Exit Points	60
Number of Entrances	30
Number of Exits	30
License Plates per Reserved Parking Space	10,000
Parking Space Detectors per Parking Lot	500
Parking Space per Parking Lot	1,500
Parking Available Displays per Parking Lot	30
Image Size per Layer	15 MB
Resolution per Layer	8,100 × 8,100
Total Layers	128
Layers per Parking Lot	16
Resources per Layer (parking spaces not included)	600
Parking Spaces per Layer	1,000

## Access Control

Access Permission Groups	500
Persons per Permission Group	30,000
Door Groups	500

## Video Intercom

Rooms	5,000
Persons per Room	10
VDP Accounts	5

## Attendance

Attendance Terminals	64
Attendance Periods	64
Attendance Shifts	100

## Synthesis

Bridges	5
Incoming Trigger Events	100
Incoming Trigger Sources	500

## Group Talk

Groups	30
Users per Group	100

## Notification Center

Notification Center Messages	1,000
------------------------------	-------

## Data Storage

Event Records	20,000,000
Face Recognition Records	20,000,000
ANPR Records	5,000,000
Metadata Records	5,000,000
Access Control Records	5,000,000
Video Intercom Records	5,000,000
Visitor Records	5,000,000
Entrance Records	5,000,000
Exit Records	5,000,000
Parking Records	5,000,000
Attendance Records	5,000,000
Lift Control Records	5,000,000
Historical Count Records	5,000,000
In Area Statistical Records	5,000,000
Heat Map Records	5,000,000
MPT Records	5,000,000
Operator Logs	5,000,000
Service Logs	5,000,000
Independent Data Deployment-Event Records	30,000,000
Independent Data Deployment-Face Recognition Records	30,000,000
Independent Data Deployment-ANPR Records	30,000,000
Independent Data Deployment-Video Metadata Records	30,000,000



## Server Specification

Parameter		Single Server	Multiple Servers
<b>Number of sub servers per system</b>	Sub Servers	-	10 servers
<b>Total Devices</b>	Devices	2,000 devices	20,000 devices
	Auto-Registered Devices	1,000 devices	10,000 devices
<b>Video Devices and Channels<sup>②</sup></b>	Video Devices and Channels	1,000 devices; 2,000 channels	10,000 devices; 20,000 channels
	P2P Devices	32 devices	
	Add Devices by ONVIF	1,000 devices; 2,000 channels	10,000 devices; 20,000 channels
	ANPR Channels	500 channels	5,000 channels
	Face Recognition Devices and Channels	100 devices; 500 channels	1,000 devices; 5,000 channels
	Video Metadata Channels	500 channels	5,000 channels
	MPT Devices	100 devices	300 devices
	EEC Devices	64 devices	
	<b>Access Control Devices</b>	Access Control Devices and Lift Control Devices	500 devices; 1,000 channels
Access Control Devices		500 devices; 1,000 doors	1,500 devices, 3,000 doors
Lift Control Devices		500 devices; 1,000 channels	1,500 devices, 3,000 channels
VDP		2,000 devices	
<b>Alarm Devices</b>	Alarm Controllers	100 devices; 1,000 zones	500 devices; 5,000 zones
	Emergency Phone Towers	1,000 devices; 2,000 channels	10,000 devices; 20,000 channels
<b>Security Screening Devices</b>	Security Screening Machines	20 devices	200 devices
	Walk-through Metal Detectors	60 devices	600 devices
<b>Parking Lot Devices</b>	Parking Space Detectors	500 devices; 1,500 parking spaces	2,000 devices; 6,000 parking spaces
	Parking Space Available Displays	150 displays	600 displays
<b>Intelligent Analysis</b>	People Counting Channels	100 channels	300 channels
	Heat Map Channels	100 channels	300 channels
<b>Multi-site</b>	Sites	100 sites	
	Devices per Site	10,000 devices; 20,000 channels	
	Total Devices	10,000 devices; 20,000 channels	
<b>Others</b>	POS Channels	100 channels	300 channels

<b>Media Transmission Server</b>	Total Incoming Bandwidth	600 Mbps	6,000 Mbps
	Incoming Video Bandwidth	600 Mbps	6,000 Mbps
	Incoming Picture Bandwidth	200 Mbps	2,000 Mbps
	Total Outgoing Bandwidth	600 Mbps	6,000 Mbps
	Outgoing Video Bandwidth	600 Mbps	6,000 Mbps
	Outgoing Picture Bandwidth	200 Mbps	2,000 Mbps
	Total Storage Bandwidth	600 Mbps	6,000 Mbps
	Video Storage Bandwidth	600 Mbps	6,000 Mbps
	Picture Storage Bandwidth	200 Mbps	2,000 Mbps
<b>Playback, Storage and Download</b>	Prerecording Bandwidth for Alarm Recordings	400 Mbps	4,000 Mbps
	Maximum Capacity of Central Storage (IPSAN)	400 TB	4 PB
<b>Event<sup>③</sup></b>	Total Events <sup>④</sup>	300 per second	600 per second
	Storage of Events or Alarms with Pictures <sup>⑤</sup>	300 per second	600 per second
	Alarms with Snapshots (Stored on Devices)	300 per second	600 per second
	Access Control Events	300 per second	600 per second

- ① Number of face watch lists and devices: Number of faces × number of devices < 10 million. For example, a face watch lists of 200 thousand faces can be sent to 50 face recognition devices including IVSS, NVR and face recognition cameras.
- ② Total number of video devices and channels indicates that the number of video devices and channels connected to the platform, such as IPC, NVR, and ITC, cannot exceed the parameter.
- ③ Event concurrency is peak concurrency: 20 minutes of peak concurrency test, 3 times a day, and 30% peak concurrency for 8 hours per day. Event concurrency is in accordance with database concurrent writes. Concurrency of event with pictures must take picture write capacity of the disk into account.
- ④ Total event concurrency: The ability to write all events to system records concurrently.
- ⑤ For concurrency of events with pictures, picture write concurrency should also be taken into consideration. The picture write concurrency of an individual server is up to 200 Mbps, so the concurrency of events with pictures is limited by picture write capacity.

## ■ DSS Mobile Client Main Functions

### ***DSS Agile***

#### ◆ **Live View**

Even when you are away from your computer, you can also ensure the safety of your area right on DSS Agile. You can watch the real-time videos remotely from up to 16 channels at the same time with 3 stream types for you to choose according to the status of your mobile network. PTZ control is also supported so that you can cover most of the area. When anything of interest happens, you can take snapshots or recordings as evidence that stores on your phone, or send a voice message to deter unwanted activities.

#### ◆ **Playback**

Videos stored on devices or the server can both be played up to 8X faster or 1/8X slower on DSS Agile. You can also use the manual recording function to record important content and save it to your phone.

### ◆ **Access Control**

With DSS Agile, you can remotely monitor and operate all access control devices. For example, you can open a door for someone who has a proven identity, or set a door to be always closed so that no one can access.

### ◆ **Target Tracking**

For suspicious activities, you can locate targets directly in DSS Agile by searching for face recognition records from a period, uploading a face image of a specific target, or searching for capture records of people, non-motor vehicles, and motor vehicles by features.

### ◆ **Event**

You can receive and process various types of alarms. You can also receive alarms when DSS Agile is not running with a subscription button.

### ◆ **Video Intercom**

You can make calls to and receive calls from master stations, indoor monitors and door stations. After subscribing to offline calls, you will still receive calls even when the App is not running. Also, a complete records of incoming and outgoing calls ensure that you will not miss any important message.

### ◆ **File Management**

Snapshots and videos stored on devices or the server can be managed as you need, such as deleting them or exporting them to your album.

## **DSS Agile VDP**

---

### ◆ **Visitor Management**

You can easily manage visitors by registering their information and generating visitor passes with necessary access permissions. When they arrive, they can use the passes to gain access to where you are. DSS Agile VDP will log when visitors begin and end their visits.

### ◆ **Intercom Monitoring**

When guests arrive, they can call you on the door station or you can verify their identities through the live video. After confirming they are who you are expecting, you can remotely open the door for them directly on DSS Agile VDP. If you spot any unwanted activities, tap and call the management center to report an emergency.

### ◆ **Message Center**

The unlock records and alarm messages on the indoor monitor are fully accessible on DSS Agile VDP, allowing you to identify potential threats and ensure the safety of your residence.

## ■ DSS Mobile Client Requirements

	iOS	Android
<b>Model</b>	iPhone 5S or later	-
<b>RAM</b>	-	2 GB and above
<b>Resolution</b>	-	1280 × 720 or higher
<b>Operating System</b>	iOS 10.0 or later	Android 5.0 or later
<b>Language</b>	Arabic, English (United States), French, Russian, Simplified Chinese	